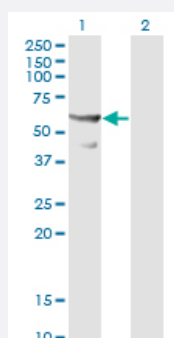


# CDC45L monoclonal antibody (M01), clone 3F11-1F3

Catalog # H00008318-M01

Size 100 ug

## Applications

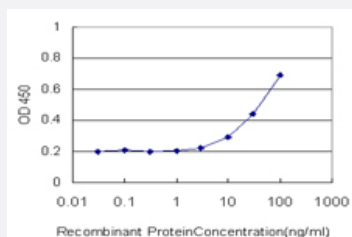


### Western Blot (Transfected lysate)

Western Blot analysis of CDC45L expression in transfected 293T cell line by CDC45L monoclonal antibody (M01), clone 3F11-1F3.

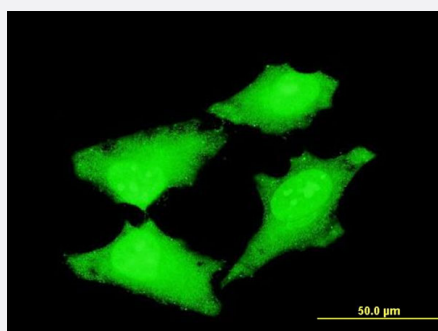
Lane 1: CDC45L transfected lysate(65.6 KDa).

Lane 2: Non-transfected lysate.



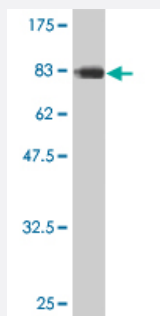
### Sandwich ELISA (Recombinant protein)

Detection limit for recombinant GST tagged CDC45L is approximately 3ng/ml as a capture antibody.



### Immunofluorescence

Immunofluorescence of monoclonal antibody to CDC45L on HeLa cell .  
[antibody concentration 10 ug/ml]



Western Blot detection against Immunogen (88 KDa) .

## Specification

<b>Product Description</b>	Mouse monoclonal antibody raised against a full length recombinant CDC45L.
<b>Immunogen</b>	CDC45L (AAH06232, 1 a.a. ~ 566 a.a) full-length recombinant protein with GST tag. MW of the GST tag alone is 26 KDa.
<b>Sequence</b>	MFVSDFRKEFYEVVQSQRVLLFVASDVDALCACKILQALFQCDHVQYTLVPVSGWQELETAFLE HKEQFHYFILINGANVDLLDILQPDDETIFFVCDTHRPVNVVNVYNDTQIKLLIKQDDDLEVPAYEDI FRDEEEDEEHSGNDSGSEPSEKRTRLEEEIVEQTMRRRQRREWEARRRDILFDYEQYEHGTS SAMVMFELAWMLSKDLNDMLWWAVGLTDQWVQDKITQMKYVTDVGVLQRHVSRRHNRNEDE ENTLSVDCTRISFEYDLRLVLYQHWSLHDSL CNTSYTAARFKLWSVHGQKRLQEFLADMGLPLKQ VKQKFQAMDISLKENLREMIEESANKFGMKDMRVQTFSIHFGFKHKFLASDVVFATMSLMESPEK DGSQTDHFIQALDSLRSNLDKLYHGLELAKKQLRATQQTIASCLCTNLVISQGPFLYCSLMEGTP DVMLFSRPASLSLLSKHLLKSFVCSTKNRRCKLLPLVMAAPLSMEHGTVTVVGIPPETDSSDRKN FFGRAFEKAAESTSSRMLHNHFDLSVIELKAEDRSKFLDALISLLS
<b>Host</b>	Mouse
<b>Reactivity</b>	Human
<b>Interspecies Antigen Sequence</b>	Mouse (92); Rat (91)
<b>Isotype</b>	IgG2b Kappa
<b>Quality Control Testing</b>	Antibody Reactive Against Recombinant Protein. Western Blot detection against Immunogen (88 KDa) .
<b>Storage Buffer</b>	In 1x PBS, pH 7.4
<b>Storage Instruction</b>	Store at -20°C or lower. Aliquot to avoid repeated freezing and thawing.

## Applications

- Western Blot (Transfected lysate)

Western Blot analysis of CDC45L expression in transfected 293T cell line by CDC45L monoclonal antibody (M01), clone 3F11-1F3.

Lane 1: CDC45L transfected lysate(65.6 KDa).

Lane 2: Non-transfected lysate.

[Protocol Download](#)

- Western Blot (Recombinant protein)

[Protocol Download](#)

- Sandwich ELISA (Recombinant protein)

Detection limit for recombinant GST tagged CDC45L is approximately 3ng/ml as a capture antibody.

[Protocol Download](#)

- ELISA

- Immunofluorescence

Immunofluorescence of monoclonal antibody to CDC45L on HeLa cell . [antibody concentration 10 ug/ml]

## Gene Info — CDC45L

Entrez GeneID	<a href="#">8318</a>
---------------	----------------------

GeneBank Accession#	<a href="#">BC006232</a>
---------------------	--------------------------

Protein Accession#	<a href="#">AAH06232</a>
--------------------	--------------------------

Gene Name	CDC45L
-----------	--------

Gene Alias	CDC45, CDC45L2, PORC-PI-1
------------	---------------------------

Gene Description	CDC45 cell division cycle 45-like (S. cerevisiae)
------------------	---

Omim ID	<a href="#">603465</a>
---------	------------------------

Gene Ontology	<a href="#">Hyperlink</a>
---------------	---------------------------

**Gene Summary**

The protein encoded by this gene was identified by its strong similarity with *Saccharomyces cerevisiae* Cdc45, an essential protein required to the initiation of DNA replication. Cdc45 is a member of the highly conserved multiprotein complex including Cdc6/Cdc18, the minichromosome maintenance proteins (MCMs) and DNA polymerase, which is important for early steps of DNA replication in eukaryotes. This protein has been shown to interact with MCM7 and DNA polymerase alpha. Studies of the similar gene in *Xenopus* suggested that this protein play a pivotal role in the loading of DNA polymerase alpha onto chromatin. Multiple polyadenylation sites of this gene are reported. [provided by RefSeq]

**Other Designations**

CDC45 (cell division cycle 45, *S.cerevisiae*, homolog)-like|CDC45-like|CDC45-related protein|cell division cycle 45-like 2|human CDC45

**Pathway**

- [Cell cycle](#)

**Disease**

- [Colorectal Neoplasms](#)
- [Disease Progression](#)
- [Genetic Predisposition to Disease](#)
- [Tobacco Use Disorder](#)