

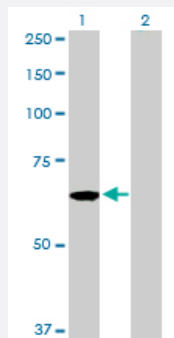
MaxPab®

# CDC45L purified MaxPab rabbit polyclonal antibody (D01P)

Catalog # H00008318-D01P

Size 100 ug

## Applications

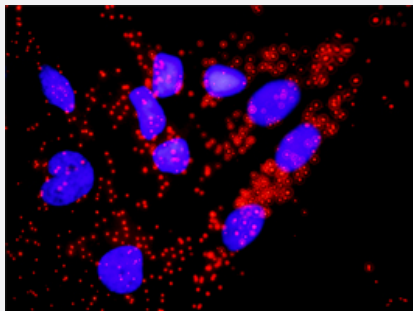


### Western Blot (Transfected lysate)

Western Blot analysis of CDC45L expression in transfected 293T cell line ([H00008318-T02](#)) by CDC45L MaxPab polyclonal antibody.

Lane 1: CDC45L transfected lysate(65.60 KDa).

Lane 2: Non-transfected lysate.



### In situ Proximity Ligation Assay (Cell)

Proximity Ligation Analysis of protein-protein interactions between CDC45L and CDKN1A. HeLa cells were stained with anti-CDC45L rabbit purified polyclonal 1:1200 and anti-CDKN1A mouse monoclonal antibody 1:50. Each red dot represents the detection of protein-protein interaction complex, and nuclei were counterstained with DAPI (blue).

## Specification

### Product Description

Rabbit polyclonal antibody raised against a full-length human CDC45L protein.

### Immunogen

CDC45L (NP\_003495.1, 1 a.a. ~ 566 a.a) full-length human protein.

Sequence	MFVSDFRKEFYEVVQSQRVLLFVASDVDALCACKILQALFQCDHVQYTLVPVSGWQELETAFLE HKEQFHYFILINGANVDLLDILQPDEDTIFFVCDTHRPVNVNVYNDTQIKLLIKQDDDLEVPAIEDI FRDEEEDEEHSGNDSGDSEPSEKTRTRLEEEIVEQTMRRRQRREWEARRRDILFDYEQYEHGTS SAMVMFELAWMLSKDLNDMLWWAVGLTDQWVQDKITQMKYVTDVGVLQRHVSRRHNRNEDE ENTLSVDCTRISFEYDLRLVLYQHWSLHDSL CNTSYTAARFKLWSVHGQKRLQEFLADMGLPLKQ VKQKFQAMDISLKENLREMIEESANKFGMKDMRVQTF SIHF GFKHKFLASDVVFATMSLMESPEK DGSGTDHFIALDSLRSNLDKLYHGLELAKKQLRATQQTIASCLCTNLVISQGPFLYCSLMEGTP DVMLFSRPASLSLLSKHLLKSFVCSTKNRRCKLLPLVMAAPLSMEHGTVTVVGIPPETDSSDRKN FFGRAFEKAAESTSSRMLHNHFDLSVIELKAEDRSKFLDALISLLS
Host	Rabbit
Reactivity	Human
Interspecies Antigen Sequence	Mouse (92); Rat (91)
Quality Control Testing	Antibody reactive against mammalian transfected lysate.
Storage Buffer	In 1x PBS, pH 7.4
Storage Instruction	Store at -20°C or lower. Aliquot to avoid repeated freezing and thawing.

## Applications

- Western Blot (Transfected lysate)

Western Blot analysis of CDC45L expression in transfected 293T cell line ([H00008318-T02](#)) by CDC45L MaxPab polyclonal antibody.

Lane 1: CDC45L transfected lysate(65.60 KDa).

Lane 2: Non-transfected lysate.

[Protocol Download](#)

- In situ* Proximity Ligation Assay (Cell)

Proximity Ligation Analysis of protein-protein interactions between CDC45L and CDKN1A. HeLa cells were stained with anti-CDC45L rabbit purified polyclonal 1:1200 and anti-CDKN1A mouse monoclonal antibody 1:50. Each red dot represents the detection of protein-protein interaction complex, and nuclei were counterstained with DAPI (blue).

## Gene Info — CDC45L

Entrez GeneID	<a href="#">8318</a>
GeneBank Accession#	<a href="#">NM_003504</a>
Protein Accession#	<a href="#">NP_003495.1</a>

Gene Name	CDC45L
Gene Alias	CDC45, CDC45L2, PORC-PI-1
Gene Description	CDC45 cell division cycle 45-like (S. cerevisiae)
Omim ID	<a href="#">603465</a>
Gene Ontology	<a href="#">Hyperlink</a>
Gene Summary	<p>The protein encoded by this gene was identified by its strong similarity with <i>Saccharomyces cerevisiae</i> Cdc45, an essential protein required to the initiation of DNA replication. Cdc45 is a member of the highly conserved multiprotein complex including Cdc6/Cdc18, the minichromosome maintenance proteins (MCMs) and DNA polymerase, which is important for early steps of DNA replication in eukaryotes. This protein has been shown to interact with MCM7 and DNA polymerase alpha. Studies of the similar gene in <i>Xenopus</i> suggested that this protein play a pivotal role in the loading of DNA polymerase alpha onto chromatin. Multiple polyadenylation sites of this gene are reported. [provided by RefSeq]</p>
Other Designations	CDC45 (cell division cycle 45, S.cerevisiae, homolog)-like CDC45-like CDC45-related protein cell division cycle 45-like 2 human CDC45

## Pathway

- [Cell cycle](#)

## Disease

- [Colorectal Neoplasms](#)
- [Disease Progression](#)
- [Genetic Predisposition to Disease](#)
- [Tobacco Use Disorder](#)