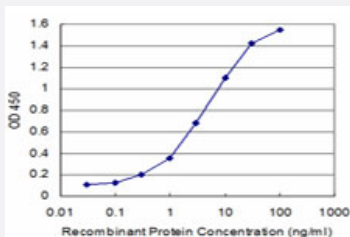


# AXIN1 monoclonal antibody (M01), clone 2B11

Catalog # H00008312-M01

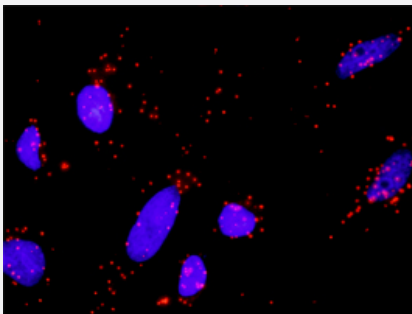
Size 100 ug

## Applications



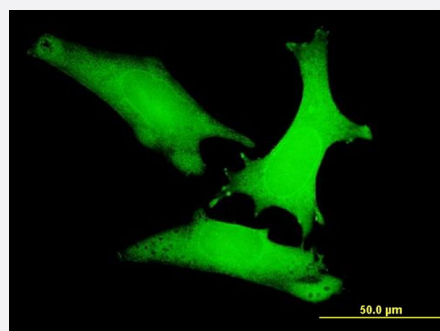
### Sandwich ELISA (Recombinant protein)

Detection limit for recombinant GST tagged AXIN1 is approximately 0.3ng/ml as a capture antibody.



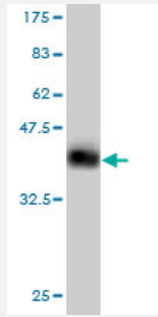
### In situ Proximity Ligation Assay (Cell)

Proximity Ligation Analysis of protein-protein interactions between GSK3B and AXIN1. HeLa cells were stained with anti-GSK3B rabbit purified polyclonal 1:1200 and anti-AXIN1 mouse monoclonal antibody 1:50. Each red dot represents the detection of protein-protein interaction complex, and nuclei were counterstained with DAPI (blue).



### Immunofluorescence

Immunofluorescence of monoclonal antibody to AXIN1 on HeLa cell . [antibody concentration 10 ug/ml]



Western Blot detection against Immunogen (36.52 KDa) .

## Specification

<b>Product Description</b>	Mouse monoclonal antibody raised against a partial recombinant AXIN1.
<b>Immunogen</b>	AXIN1 (NP_003493, 643 a.a. ~ 740 a.a) partial recombinant protein with GST tag. MW of the GST tag alone is 26 KDa.
<b>Sequence</b>	ISRHRRTGHGSSGTRKPQPHENSRLSLEHPWAGPQLRTSVQPSHLFIQDPTMPPHPAPNPLTQLEEARRRLEEEEEKRASRAPSKQRYVQEVMMRRGRA
<b>Host</b>	Mouse
<b>Reactivity</b>	Human
<b>Interspecies Antigen Sequence</b>	Mouse (78); Rat (78)
<b>Isotype</b>	IgG2a Kappa
<b>Quality Control Testing</b>	Antibody Reactive Against Recombinant Protein. Western Blot detection against Immunogen (36.52 KDa) .
<b>Storage Buffer</b>	In 1x PBS, pH 7.4
<b>Storage Instruction</b>	Store at -20°C or lower. Aliquot to avoid repeated freezing and thawing.

## Applications

- Western Blot (Recombinant protein)

[Protocol Download](#)

- Sandwich ELISA (Recombinant protein)

Detection limit for recombinant GST tagged AXIN1 is approximately 0.3ng/ml as a capture antibody.

[Protocol Download](#)

- ELISA

- *In situ* Proximity Ligation Assay (Cell)

Proximity Ligation Analysis of protein-protein interactions between GSK3B and AXIN1. HeLa cells were stained with anti-GSK3B rabbit purified polyclonal 1:1200 and anti-AXIN1 mouse monoclonal antibody 1:50. Each red dot represents the detection of protein-protein interaction complex, and nuclei were counterstained with DAPI (blue).

- Immunofluorescence

Immunofluorescence of monoclonal antibody to AXIN1 on HeLa cell . [antibody concentration 10 ug/ml]

## Gene Info — AXIN1

Entrez GeneID [8312](#)

GeneBank Accession# [NM\\_003502](#)

Protein Accession# [NP\\_003493](#)

Gene Name AXIN1

Gene Alias AXIN, MGC52315

Gene Description axin 1

Omim ID [114550 603816 607864](#)

Gene Ontology [Hyperlink](#)

**Gene Summary** This gene encodes a cytoplasmic protein which contains a regulation of G-protein signaling (RGS ) domain and a dishevelled and axin (DIX) domain. The encoded protein interacts with adenomatosis polyposis coli, catenin (cadherin-associated protein), beta 1, 88kDa, glycogen synthase kinase 3 beta, protein phosphate 2, and itself. This protein functions as a negative regulator of the wingless-type MMTV integration site family, member 1 (WNT) signaling pathway and can induce apoptosis. The crystal structure of a portion of this protein, alone and in a complex with other proteins, has been resolved. Mutations in this gene have been associated with hepatocellular carcinoma, hepatoblastomas, ovarian endometrioid adenocarcinomas, and medulloblastomas. Two transcript variants encoding distinct isoforms have been identified for this gene. [provided by RefSeq]

**Other Designations** axis inhibition protein 1|axis inhibitor 1|fused, mouse, homolog of

## Pathway

- [Basal cell carcinoma](#)
- [Colorectal cancer](#)
- [Endometrial cancer](#)
- [Pathways in cancer](#)
- [Wnt signaling pathway](#)

## Disease

- [Adenoma](#)
- [Breast cancer](#)
- [Breast Neoplasms](#)
- [Cardiovascular Diseases](#)
- [Chromosome Deletion](#)
- [Colorectal Neoplasms](#)
- [Diabetes Mellitus](#)
- [Edema](#)
- [Heart Defects](#)
- [Neoplasm Invasiveness](#)
- [Tobacco Use Disorder](#)