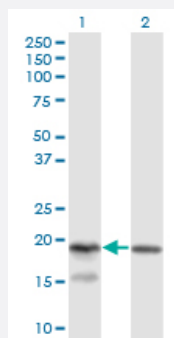


KLRC4 monoclonal antibody (M03), clone 1D10

Catalog # H00008302-M03

Size 100 ug

Applications

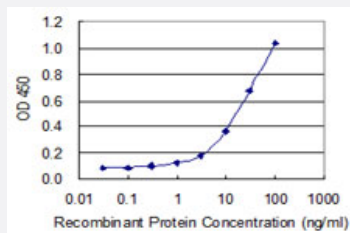


Western Blot (Transfected lysate)

Western Blot analysis of KLRC4 expression in transfected 293T cell line by KLRC4 monoclonal antibody (M03), clone 1D10.

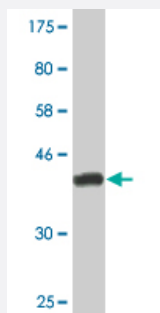
Lane 1: KLRC4 transfected lysate (18.2 KDa).

Lane 2: Non-transfected lysate.



Sandwich ELISA (Recombinant protein)

Detection limit for recombinant GST tagged KLRC4 is 0.3 ng/ml as a capture antibody.



Western Blot detection against Immunogen (43.12 KDa).

Specification

Product Description

Mouse monoclonal antibody raised against a full-length recombinant KLRC4.

Immunogen	KLRC4 (AAH17784, 1 a.a. ~ 158 a.a) full-length recombinant protein with GST tag. MW of the GST tag alone is 26 KDa.
Sequence	MNKQRGTYSEVSLAQDPKRQQRKLKGNKISISGTKQEIFQVELNLQNASSDHQGNDKTYHCKGLLPPPEKLTAEVLGIICMLMATVLKTMVLIPCIGVLEQNNFSLNRRMQKARHCGHCPEEWITYSNSCYI GKERRTWEERV CWPVLRRTLICFL
Host	Mouse
Reactivity	Human
Isotype	IgG2a Kappa
Quality Control Testing	Antibody Reactive Against Recombinant Protein. Western Blot detection against Immunogen (43.12 KDa) .
Storage Buffer	In 1x PBS, pH 7.4
Storage Instruction	Store at -20°C or lower. Aliquot to avoid repeated freezing and thawing.

Applications

- Western Blot (Transfected lysate)

Western Blot analysis of KLRC4 expression in transfected 293T cell line by KLRC4 monoclonal antibody (M03), clone 1D10.

Lane 1: KLRC4 transfected lysate(18.2 KDa).

Lane 2: Non-transfected lysate.

[Protocol Download](#)

- Western Blot (Recombinant protein)

[Protocol Download](#)

- Sandwich ELISA (Recombinant protein)

Detection limit for recombinant GST tagged KLRC4 is 0.3 ng/ml as a capture antibody.

[Protocol Download](#)

- ELISA

Gene Info — KLRC4

Entrez GeneID

[8302](#)

GeneBank Accession#	BC017784
Protein Accession#	AAH17784
Gene Name	KLRC4
Gene Alias	FLJ17759, FLJ78582, NKG2-F, NKG2F
Gene Description	killer cell lectin-like receptor subfamily C, member 4
Omim ID	602893
Gene Ontology	Hyperlink
Gene Summary	<p>Natural killer (NK) cells are lymphocytes that can mediate lysis of certain tumor cells and virus-infected cells without previous activation. They can also regulate specific humoral and cell-mediated immunity. NK cells preferentially express several calcium-dependent (C-type) lectins, which have been implicated in the regulation of NK cell function. KLRC4 is a member of the NKG2 group which are expressed primarily in natural killer (NK) cells and encodes a family of transmembrane proteins characterized by a type II membrane orientation (extracellular C terminus) and the presence of a C-type lectin domain. The NKG2 gene family is located within the NK complex, a region that contains several C-type lectin genes preferentially expressed on NK cells. The 3' end of the KLRC4 transcript includes the first non-coding exon found at the 5' end of the adjacent D12S2489E gene transcript. [provided by RefSeq]</p>
Other Designations	-

Pathway

- [Antigen processing and presentation](#)
- [Natural killer cell mediated cytotoxicity](#)

Disease

- [Abortion](#)
- [Colitis](#)
- [DNA Damage](#)
- [Genetic Predisposition to Disease](#)
- [Hepatitis B](#)
- [Leukemia](#)

- [Neoplasms](#)