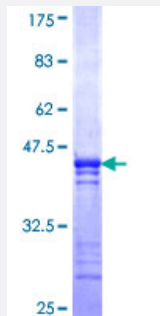


# COLQ (Human) Recombinant Protein (Q01)

Catalog # H00008292-Q01

Size 25 ug, 10 ug

## Applications



## Specification

<b>Product Description</b>	Human COLQ partial ORF ( NP_005668, 356 a.a. - 455 a.a.) recombinant protein with GST-tag at N-terminal.
<b>Sequence</b>	PIQLTPFYVPDYADQHGTCTGDLQPGEECDGNSDVGGDCIRCHRAYCGDGHRRHEGVEDCDGSDFGYLTCTYLPGSYGLQCTQYCYIDSTPCRYFT
<b>Host</b>	Wheat Germ (in vitro)
<b>Theoretical MW (kDa)</b>	36.74
<b>Interspecies Antigen Sequence</b>	Mouse (87); Rat (80)
<b>Preparation Method</b>	<a href="#">in vitro wheat germ expression system</a>
<b>Purification</b>	Glutathione Sepharose 4 Fast Flow
<b>Quality Control Testing</b>	12.5% SDS-PAGE Stained with Coomassie Blue.
<b>Storage Buffer</b>	50 mM Tris-HCl, 10 mM reduced Glutathione, pH=8.0 in the elution buffer.
<b>Storage Instruction</b>	Store at -80°C. Aliquot to avoid repeated freezing and thawing.
<b>Note</b>	Best use within three months from the date of receipt of this protein.

## Applications

- Enzyme-linked Immunoabsorbent Assay
- Western Blot (Recombinant protein)
- Antibody Production
- Protein Array

## Gene Info — COLQ

Entrez GeneID [8292](#)

GeneBank Accession# [NM\\_005677](#)

Protein Accession# [NP\\_005668](#)

Gene Name COLQ

Gene Alias EAD

Gene Description collagen-like tail subunit (single strand of homotrimer) of asymmetric acetylcholinesterase

Omim ID [603033](#) [603034](#)

Gene Ontology [Hyperlink](#)

**Gene Summary** This gene encodes the subunit of a collagen-like molecule associated with acetylcholinesterase in skeletal muscle. Each molecule is composed of three identical subunits. Each subunit contains a proline-rich attachment domain (PRAD) that binds an acetylcholinesterase tetramer to anchor the catalytic subunit of the enzyme to the basal lamina. Mutations in this gene are associated with end plate acetylcholinesterase deficiency. Multiple transcript variants encoding different isoforms have been found for this gene. [provided by RefSeq]

**Other Designations** AChE Q subunit|acetylcholinesterase collagen-like tail subunit|acetylcholinesterase-associated collagen|collagenic tail of endplate acetylcholinesterase|single strand of homotrimeric collagen-like tail subunit of asymmetric acetylcholinesterase