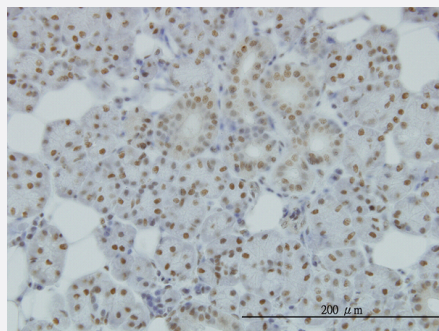


# SMC1L1 monoclonal antibody (M01), clone 1B9

Catalog # H00008243-M01

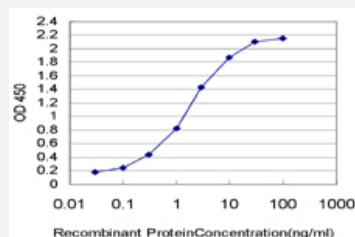
Size 100 ug

## Applications



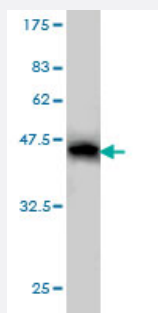
### Immunohistochemistry (Formalin/PFA-fixed paraffin-embedded sections)

Immunoperoxidase of monoclonal antibody to SMC1L1 on formalin-fixed paraffin-embedded human salivary gland. [antibody concentration 1 ug/ml]



### Sandwich ELISA (Recombinant protein)

Detection limit for recombinant GST tagged SMC1L1 is approximately 0.03ng/ml as a capture antibody.



Western Blot detection against Immunogen (36.74 KDa) .

## Specification

### Product Description

Mouse monoclonal antibody raised against a partial recombinant SMC1L1.

<b>Immunogen</b>	SMC1L1 (NP_006297, 366 a.a. ~ 465 a.a) partial recombinant protein with GST tag. MW of the GST tag alone is 26 KDa.
<b>Sequence</b>	TLEENQVKKYHRLKEEASKRAATLAQELEKFNRDQKADQDRDLLEERKKVETEAKIKQKLREIEE NQKRIEKLEEYITTSKQSLEEQKKLEGELTEEVEM
<b>Host</b>	Mouse
<b>Reactivity</b>	Human
<b>Interspecies Antigen Sequence</b>	Mouse (100)
<b>Isotype</b>	IgG1 Kappa
<b>Quality Control Testing</b>	Antibody Reactive Against Recombinant Protein. Western Blot detection against Immunogen (36.74 KDa) .
<b>Storage Buffer</b>	In 1x PBS, pH 7.4
<b>Storage Instruction</b>	Store at -20°C or lower. Aliquot to avoid repeated freezing and thawing.

## Applications

- Western Blot (Recombinant protein)

[Protocol Download](#)

- Immunohistochemistry (Formalin/PFA-fixed paraffin-embedded sections)

Immunoperoxidase of monoclonal antibody to SMC1L1 on formalin-fixed paraffin-embedded human salivary gland. [antibody concentration 1 ug/ml]

[Protocol Download](#)

- Sandwich ELISA (Recombinant protein)

Detection limit for recombinant GST tagged SMC1L1 is approximately 0.03ng/ml as a capture antibody.

[Protocol Download](#)

- ELISA

## Gene Info — SMC1A

Entrez GeneID

[8243](#)

GeneBank Accession#	<a href="#">NM_006306</a>
Protein Accession#	<a href="#">NP_006297</a>
Gene Name	SMC1A
Gene Alias	CDLS2, DKFZp686L19178, DXS423E, KIAA0178, MGC138332, SB1.8, SMC1, SMC1L1, SMC1alpha, SMCB
Gene Description	structural maintenance of chromosomes 1A
Omim ID	<a href="#">300040</a> <a href="#">300590</a>
Gene Ontology	<a href="#">Hyperlink</a>
Gene Summary	<p>Proper cohesion of sister chromatids is a prerequisite for the correct segregation of chromosome s during cell division. The cohesin multiprotein complex is required for sister chromatid cohesion. This complex is composed partly of two structural maintenance of chromosomes (SMC) proteins, SMC3 and either SMC1L2 or the protein encoded by this gene. Most of the cohesin complexes dissociate from the chromosomes before mitosis, although those complexes at the kinetochore remain. Therefore, the encoded protein is thought to be an important part of functional kinetochores. In addition, this protein interacts with BRCA1 and is phosphorylated by ATM, indicating a potential role for this protein in DNA repair. This gene, which belongs to the SMC gene family, is located in an area of the X-chromosome that escapes X inactivation. [provided by RefSeq]</p>
Other Designations	OTTHUMP00000061876 SMC1 (structural maintenance of chromosomes 1, yeast)-like 1 SMC1 structural maintenance of chromosomes 1-like 1 segregation of mitotic chromosomes 1

## Pathway

- [Cell cycle](#)

## Disease

- [De Lange Syndrome](#)