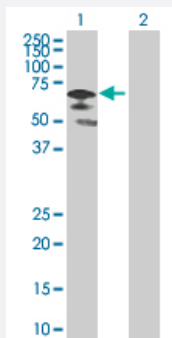


CHAF1B 293T Cell Transient Overexpression Lysate(Denatured)

Catalog # H00008208-T01

Size 100 uL

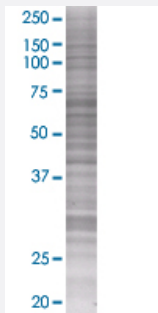
Applications



Western Blot

Lane 1: CHAF1B transfected lysate (61.5 kDa)

Lane 2: Non-transfected lysate.



SDS-PAGE Gel

CHAF1B transfected lysate.

Specification

Transfected Cell Line	293T
Plasmid	pCMV-CHAF1B full-length
Host	Human
Theoretical MW (kDa)	61.6
Interspecies Antigen Sequence	Mouse (83); Rat (84)

Quality Control Testing

Transient overexpression cell lysate was tested with Anti-CHAF1B antibody ([H00008208-B01](#)) by Western Blots.
Western Blot
Lane 1: CHAF1B transfected lysate (61.5 KDa)
Lane 2: Non-transfected lysate.
SDS-PAGE Gel
CHAF1B transfected lysate.

Storage Buffer

1X Sample Buffer (50 mM Tris-HCl, 2% SDS, 10% glycerol, 300 mM 2-mercaptoethanol, 0.01% Bromophenol blue)

Storage Instruction

Store at -80°C. Aliquot to avoid repeated freezing and thawing.

Applications

- Western Blot

Gene Info — CHAF1B

Entrez GeneID[8208](#)**GeneBank Accession#**[NM_005441](#)**Protein Accession#**[NP_005432](#)**Gene Name**

CHAF1B

Gene Alias

CAF-1, CAF-IP60, CAF1, CAF1A, CAF1P60, MPHOSPH7, MPP7

Gene Description

chromatin assembly factor 1, subunit B (p60)

Omim ID[601245](#)**Gene Ontology**[Hyperlink](#)**Gene Summary**

Chromatin assembly factor I (CAF-I) is required for the assembly of histone octamers onto newly-replicated DNA. CAF-I is composed of three protein subunits, p50, p60, and p150. The protein encoded by this gene corresponds to the p60 subunit and is required for chromatin assembly after replication. The encoded protein is differentially phosphorylated in a cell cycle-dependent manner. In addition, it is normally found in the nucleus except during mitosis, when it is released into the cytoplasm. This protein is a member of the WD-repeat HIR1 family and may also be involved in DNA repair. [provided by RefSeq]

Other Designations

CAF-1 subunit B|CAF-I 60 kDa subunit|M-phase phosphoprotein 7|chromatin assembly factor 1 subunit B|chromatin assembly factor I p60 subunit|human chromatin assembly factor-I p60 subunit