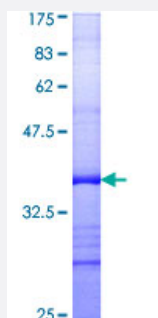


CHAF1B (Human) Recombinant Protein (Q01)

Catalog # H00008208-Q01

Size 25 ug, 10 ug

Applications



Specification

Product Description	Human CHAF1B partial ORF (AAH21218, 201 a.a. - 300 a.a.) recombinant protein with GST-tag at N-terminal.
Sequence	QKKRVAFNVSKMLSGIGAEGEARSYRMFHDDSMKSFFRRLSFTPDGSLLLTPAGCVESGENVM NTTYVFSRKNLKRPIAHLPCPGKATLAVRCCPVYFEL
Host	Wheat Germ (in vitro)
Theoretical MW (kDa)	36.63
Interspecies Antigen Sequence	Mouse (93); Rat (93)
Preparation Method	in vitro wheat germ expression system
Purification	Glutathione Sepharose 4 Fast Flow
Quality Control Testing	12.5% SDS-PAGE Stained with Coomassie Blue.
Storage Buffer	50 mM Tris-HCl, 10 mM reduced Glutathione, pH=8.0 in the elution buffer.
Storage Instruction	Store at -80°C. Aliquot to avoid repeated freezing and thawing.
Note	Best use within three months from the date of receipt of this protein.

Applications

- Enzyme-linked Immunoabsorbent Assay
- Western Blot (Recombinant protein)
- Antibody Production
- Protein Array

Gene Info — CHAF1B

Entrez GeneID [8208](#)

GeneBank Accession# [BC021218](#)

Protein Accession# [AAH21218](#)

Gene Name CHAF1B

Gene Alias CAF-1, CAF-IP60, CAF1, CAF1A, CAF1P60, MPHOSPH7, MPP7

Gene Description chromatin assembly factor 1, subunit B (p60)

Omim ID [601245](#)

Gene Ontology [Hyperlink](#)

Gene Summary Chromatin assembly factor I (CAF-I) is required for the assembly of histone octamers onto newly-replicated DNA. CAF-I is composed of three protein subunits, p50, p60, and p150. The protein encoded by this gene corresponds to the p60 subunit and is required for chromatin assembly after replication. The encoded protein is differentially phosphorylated in a cell cycle-dependent manner. In addition, it is normally found in the nucleus except during mitosis, when it is released into the cytoplasm. This protein is a member of the WD-repeat HIR1 family and may also be involved in DNA repair. [provided by RefSeq]

Other Designations CAF-1 subunit B|CAF-I 60 kDa subunit|M-phase phosphoprotein 7|chromatin assembly factor 1 subunit B|chromatin assembly factor I p60 subunit|human chromatin assembly factor-I p60 subunit