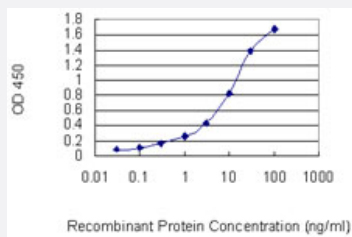


CHAF1B monoclonal antibody (M01), clone 2G7

Catalog # H00008208-M01

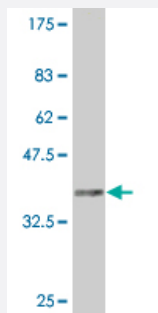
Size 100 ug

Applications



Sandwich ELISA (Recombinant protein)

Detection limit for recombinant GST tagged CHAF1B is 0.1 ng/ml as a capture antibody.



Western Blot detection against Immunogen (36.63 KDa) .

Specification

Product Description	Mouse monoclonal antibody raised against a partial recombinant CHAF1B.
Immunogen	CHAF1B (AAH21218, 201 a.a. ~ 300 a.a) partial recombinant protein with GST tag. MW of the GST tag alone is 26 KDa.
Sequence	QKKRVAFNVSKMLSGIGAEGEARSYRMFHDDSMKSFFRRLSFTPDGSLLLTPAGCVESGENVM NTTYVFSRKNLKRPIAHLPCPGKATLAVRCCPVYFEL
Host	Mouse
Reactivity	Human

Interspecies Antigen Sequence	Mouse (93); Rat (93)
Isotype	IgG2b Kappa
Quality Control Testing	Antibody Reactive Against Recombinant Protein. Western Blot detection against Immunogen (36.63 KDa) .
Storage Buffer	In 1x PBS, pH 7.4
Storage Instruction	Store at -20°C or lower. Aliquot to avoid repeated freezing and thawing.

Applications

- Western Blot (Recombinant protein)

[Protocol Download](#)

- Sandwich ELISA (Recombinant protein)

Detection limit for recombinant GST tagged CHAF1B is 0.1 ng/ml as a capture antibody.

[Protocol Download](#)

- ELISA

Gene Info — CHAF1B

Entrez GeneID	8208
GeneBank Accession#	BC021218
Protein Accession#	AAH21218
Gene Name	CHAF1B
Gene Alias	CAF-1, CAF-IP60, CAF1, CAF1A, CAF1P60, MPHOSPH7, MPP7
Gene Description	chromatin assembly factor 1, subunit B (p60)
Omim ID	601245
Gene Ontology	Hyperlink

Gene Summary

Chromatin assembly factor I (CAF-I) is required for the assembly of histone octamers onto newly-replicated DNA. CAF-I is composed of three protein subunits, p50, p60, and p150. The protein encoded by this gene corresponds to the p60 subunit and is required for chromatin assembly after replication. The encoded protein is differentially phosphorylated in a cell cycle-dependent manner. In addition, it is normally found in the nucleus except during mitosis, when it is released into the cytoplasm. This protein is a member of the WD-repeat HIR1 family and may also be involved in DNA repair. [provided by RefSeq]

Other Designations

CAF-1 subunit B|CAF-I 60 kDa subunit|M-phase phosphoprotein 7|chromatin assembly factor 1 subunit B|chromatin assembly factor I p60 subunit|human chromatin assembly factor-I p60 subunit