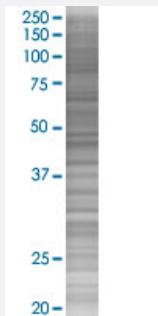


SYMPK 293T Cell Transient Overexpression Lysate(Denatured)

Catalog # H00008189-T02

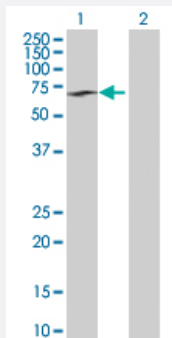
Size 100 uL

Applications



SDS-PAGE Gel

SYMPK transfected lysate.



Western Blot

Lane 1: SYMPK transfected lysate (58.90 KDa)

Lane 2: Non-transfected lysate.

Specification

Transfected Cell Line	293T
Plasmid	pCMV-SYMPK full-length
Host	Human
Theoretical MW (kDa)	58.9
Interspecies Antigen Sequence	Mouse (97); Rat (97)

Quality Control Testing

Transient overexpression cell lysate was tested with Anti-SYMPK antibody ([H00008189-D01P](#)) by Western Blots.
SDS-PAGE Gel
SYMPK transfected lysate.
Western Blot
Lane 1: SYMPK transfected lysate (58.90 KDa)
Lane 2: Non-transfected lysate.

Storage Buffer

1X Sample Buffer (50 mM Tris-HCl, 2% SDS, 10% glycerol, 300 mM 2-mercaptoethanol, 0.01% Bromophenol blue)

Storage Instruction

Store at -80°C. Aliquot to avoid repeated freezing and thawing.

Applications

- Western Blot

Gene Info — SYMPK

Entrez GeneID[8189](#)**GeneBank Accession#**[BC030214.1](#)**Protein Accession#**[AAH30214.1](#)**Gene Name**

SYMPK

Gene Alias

FLJ27092, SPK, SYM

Gene Description

symplekin

Omim ID[602388](#)**Gene Ontology**[Hyperlink](#)**Gene Summary**

This gene encodes a nuclear protein that functions in the regulation of polyadenylation and promotes gene expression. The protein forms a high-molecular weight complex with components of the polyadenylation machinery. It is thought to serve as a scaffold for recruiting regulatory factors to the polyadenylation complex. It also participates in 3'-end maturation of histone mRNAs, which do not undergo polyadenylation. The protein also localizes to the cytoplasmic plaques of tight junctions in some cell types. [provided by RefSeq]

Other Designations

-

Pathway

- [Tight junction](#)

Disease

- [Crohn Disease](#)
- [Genetic Predisposition to Disease](#)