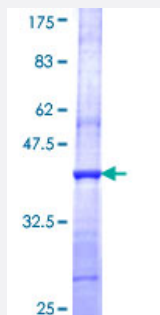


# SF3A2 (Human) Recombinant Protein (Q01)

Catalog # H00008175-Q01

Size 25 ug, 10 ug

## Applications



## Specification

<b>Product Description</b>	Human SF3A2 partial ORF ( NP_009096, 112 a.a. - 216 a.a.) recombinant protein with GST-tag at N-terminal.
<b>Sequence</b>	IGRPGYKVTKQRDSEMGQQSLLFQIDYPEIAEGIMPRHRFMSAYEQRIEPPDRRWQYLLMAAEPYE TIAFKVPSREIDKAEGKFWTHWNRETKQFFLQFHFKEK
<b>Host</b>	Wheat Germ (in vitro)
<b>Theoretical MW (kDa)</b>	37.29
<b>Preparation Method</b>	<a href="#">in vitro wheat germ expression system</a>
<b>Purification</b>	Glutathione Sepharose 4 Fast Flow
<b>Quality Control Testing</b>	12.5% SDS-PAGE Stained with Coomassie Blue.
<b>Storage Buffer</b>	50 mM Tris-HCl, 10 mM reduced Glutathione, pH=8.0 in the elution buffer.
<b>Storage Instruction</b>	Store at -80°C. Aliquot to avoid repeated freezing and thawing.
<b>Note</b>	Best use within three months from the date of receipt of this protein.

## Applications

- Enzyme-linked Immunoabsorbent Assay
- Western Blot (Recombinant protein)
- Antibody Production
- Protein Array

## Gene Info — SF3A2

Entrez GeneID [8175](#)

GeneBank Accession# [NM\\_007165](#)

Protein Accession# [NP\\_009096](#)

Gene Name SF3A2

Gene Alias PRP11, PRPF11, SAP62, SF3a66

Gene Description splicing factor 3a, subunit 2, 66kDa

Omim ID [600796](#)

Gene Ontology [Hyperlink](#)

**Gene Summary** This gene encodes subunit 2 of the splicing factor 3a protein complex. The splicing factor 3a heterotrimer includes subunits 1, 2 and 3 and is necessary for the in vitro conversion of 15S U2 snRNP into an active 17S particle that performs pre-mRNA splicing. Subunit 2 interacts with subunit 1 through its amino-terminus while the single zinc finger domain of subunit 2 plays a role in its binding to the 15S U2 snRNP. Subunit 2 may also function independently of its RNA splicing function as a microtubule-binding protein. [provided by RefSeq]

**Other Designations** pre-mRNA splicing factor SF3A, subunit 2|spliceosome associated protein 62|splicing factor 3a, subunit 2

## Disease

- [Tobacco Use Disorder](#)