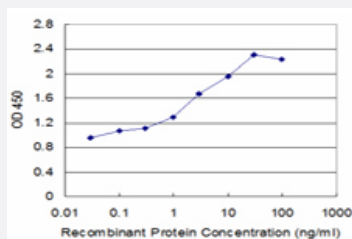


SLC14A2 monoclonal antibody (M01), clone 3E7

Catalog # H00008170-M01

Size 100 ug

Applications



Sandwich ELISA (Recombinant protein)

Detection limit for recombinant GST tagged SLC14A2 is approximately 1ng/ml as a capture antibody.

Specification

Product Description	Mouse monoclonal antibody raised against a partial recombinant SLC14A2.
Immunogen	SLC14A2 (NP_009094, 40 a.a. ~ 128 a.a) partial recombinant protein with GST tag. MW of the GST tag alone is 26 KDa.
Sequence	ALPLLEMPPEEKDLRSSNEDSHIVKIEKLNERSKRKDDGVAHRDSAGQRCICLSKAVGYLTGDMKE YRWLKDCKHLALQFIDWVLRGTAQ
Host	Mouse
Reactivity	Human
Interspecies Antigen Sequence	Mouse (72); Rat (72)
Isotype	IgG2a Kappa
Quality Control Testing	Antibody Reactive Against Recombinant Protein.
Storage Buffer	In 1x PBS, pH 7.4
Storage Instruction	Store at -20°C or lower. Aliquot to avoid repeated freezing and thawing.

Applications

- Sandwich ELISA (Recombinant protein)

Detection limit for recombinant GST tagged SLC14A2 is approximately 1ng/ml as a capture antibody.

[Protocol Download](#)

- ELISA

Gene Info — SLC14A2

Entrez GeneID	8170
GeneBank Accession#	NM_007163
Protein Accession#	NP_009094
Gene Name	SLC14A2
Gene Alias	FLJ16167, HUT2, MGC119566, MGC119567, UT-A2, UT2, UTA, UTR, HUT-A6
Gene Description	solute carrier family 14 (urea transporter), member 2
Omim ID	601611
Gene Ontology	Hyperlink
Gene Summary	In mammalian cells, urea is the chief end-product of nitrogen catabolism and plays an important role in the urinary concentration mechanism. Thus, the plasma membrane of erythrocytes and some renal epithelial cells exhibit an elevated urea permeability that is mediated by highly selective urea transporters. In mammals, 2 urea transporters have been identified: the renal tubular urea transporter, UT2, and the erythrocyte urea transporter, UT11 (SLC14A1; MIM 111000).[supplied by OMIM]
Other Designations	Urea transporter-2

Disease

- [Hypertension](#)
- [Metabolic Syndrome X](#)
- [Tobacco Use Disorder](#)