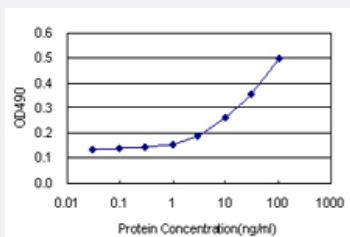


TCL1A (Human) Matched Antibody Pair

Catalog # H00008115-AP11

Size 1 Set

Applications



Sandwich ELISA detection sensitivity ranging from 1 ng/ml to 100 ng/ml.

Specification

Product Description	This antibody pair set comes with a matched antibody pair to detect and quantify the protein level of human TCL1A.
Reactivity	Human
Interspecies Antigen Sequence	Mouse (56); Rat (58)
Quality Control Testing	Standard curve using recombinant protein (H00008115-P01) as an analyte. Sandwich ELISA detection sensitivity ranging from 1 ng/ml to 100 ng/ml.
Supplied Product	Antibody pair set content: 1. Capture antibody: rabbit MaxPab® affinity purified polyclonal anti-TCL1A (100 ug) 2. Detection antibody: mouse monoclonal anti-TCL1A, IgG1 Kappa (20 ug) *Reagents are sufficient for at least 1-2 x 96 well plates using recommended protocols.
Storage Instruction	Store reagents of the antibody pair set at -20°C or lower. Please aliquot to avoid repeated freeze thaw cycle. Reagents should be returned to -20°C storage immediately after use.

Applications

- ELISA Pair (Recombinant protein)

[Protocol Download](#)

Gene Info — TCL1A

Entrez GeneID	8115
Gene Name	TCL1A
Gene Alias	TCL1
Gene Description	T-cell leukemia/lymphoma 1A
Omim ID	186960
Gene Ontology	Hyperlink
Other Designations	T-cell lymphoma-1 T-cell lymphoma-1A

Disease

- [Breast Neoplasms](#)
- [Tobacco Use Disorder](#)