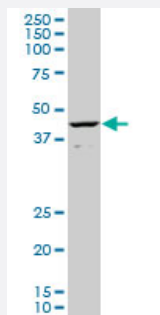


CART1 monoclonal antibody (M02), clone 2A10

Catalog # H00008092-M02

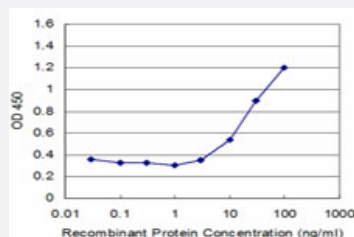
Size 100 ug

Applications



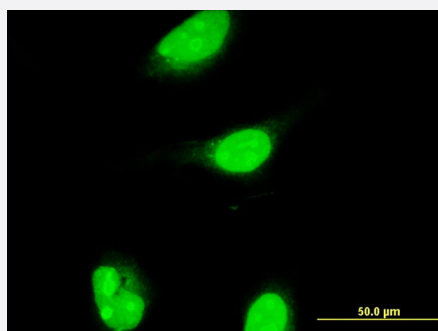
Western Blot (Cell lysate)

CART1 monoclonal antibody (M02), clone 2A10. Western Blot analysis of CART1 expression in HeLa S3 NE (Cat # L013V3).



Sandwich ELISA (Recombinant protein)

Detection limit for recombinant GST tagged CART1 is approximately 3ng/ml as a capture antibody.



Immunofluorescence

Immunofluorescence of monoclonal antibody to ALX1 on HeLa cell . [antibody concentration 10 ug/ml]



Western Blot detection against Immunogen (37.73 KDa) .

Specification

Product Description	Mouse monoclonal antibody raised against a partial recombinant CART1.
Immunogen	CART1 (NP_008913, 198 a.a. ~ 306 a.a) partial recombinant protein with GST tag. MW of the GST tag alone is 26 KDa.
Sequence	QAKSHFAATYDISVLPRDSTYPQIQNNLWAGNASGGSVVTSCMLPRDTSSCMTPTYSHSPRTDSSY TGFSNHQNQFSHVPLNNFFTDSSLTGATNGHAFETKPEFERRSS
Host	Mouse
Reactivity	Human
Interspecies Antigen Sequence	Mouse (99); Rat (96)
Isotype	IgG2a Kappa
Quality Control Testing	Antibody Reactive Against Recombinant Protein. Western Blot detection against Immunogen (37.73 KDa) .
Storage Buffer	In 1x PBS, pH 7.4
Storage Instruction	Store at -20°C or lower. Aliquot to avoid repeated freezing and thawing.

Applications

- Western Blot (Cell lysate)

CART1 monoclonal antibody (M02), clone 2A10. Western Blot analysis of CART1 expression in Hela S3 NE (Cat # L013V3).

[Protocol Download](#)

- Western Blot (Recombinant protein)

[Protocol Download](#)

- Sandwich ELISA (Recombinant protein)

Detection limit for recombinant GST tagged CART1 is approximately 3ng/ml as a capture antibody.

[Protocol Download](#)

- ELISA

- Immunofluorescence

Immunofluorescence of monoclonal antibody to ALX1 on HeLa cell . [antibody concentration 10 ug/ml]

Gene Info — ALX1

Entrez GeneID [8092](#)

GeneBank Accession# [NM_006982](#)

Protein Accession# [NP_008913](#)

Gene Name ALX1

Gene Alias CART1

Gene Description ALX homeobox 1

Omim ID [601527](#)

Gene Ontology [Hyperlink](#)

Gene Summary The specific function of this gene has yet to be determined in humans; however, in rodents, it is necessary for survival of the forebrain mesenchyme and may also be involved in development of the cervix. Mutations in the mouse gene lead to neural tube defects such as acrania and meroanence phaly. [provided by RefSeq]

Other Designations Cartilage homeoprotein 1|cartilage paired-class homeoprotein 1

Disease

- [Spinal Dysraphism](#)