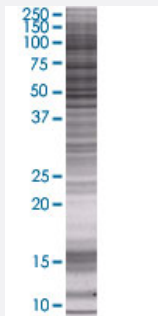


# PDHX 293T Cell Transient Overexpression Lysate(Denatured)

Catalog # H00008050-T01

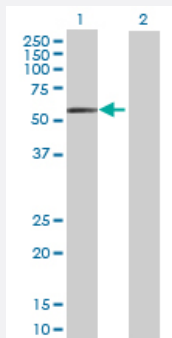
Size 100 uL

## Applications



### SDS-PAGE Gel

PDHX transfected lysate.



### Western Blot

Lane 1: PDHX transfected lysate ( 55.22 KDa)

Lane 2: Non-transfected lysate.

## Specification

Transfected Cell Line	293T
Plasmid	pCMV-PDHX full-length
Host	Human
Theoretical MW (kDa)	55.22
Interspecies Antigen Sequence	Mouse (85)

**Quality Control Testing**

Transient overexpression cell lysate was tested with Anti-PDHX antibody ([H00008050-B01](#)) by Western Blots.  
SDS-PAGE Gel  
PDHX transfected lysate.  
Western Blot  
Lane 1: PDHX transfected lysate ( 55.22 KDa)  
Lane 2: Non-transfected lysate.

**Storage Buffer**

1X Sample Buffer (50 mM Tris-HCl, 2% SDS, 10% glycerol, 300 mM 2-mercaptoethanol, 0.01% Bromophenol blue)

**Storage Instruction**

Store at -80°C. Aliquot to avoid repeated freezing and thawing.

## Applications

- Western Blot

## Gene Info — PDHX

**Entrez GeneID**

[8050](#)

**GeneBank Accession#**

[BC010389.1](#)

**Protein Accession#**

[AAH10389.1](#)

**Gene Name**

PDHX

**Gene Alias**

DLDBP, E3BP, OPDX, PDX1, proX

**Gene Description**

pyruvate dehydrogenase complex, component X

**Omim ID**

[245349 608769](#)

**Gene Ontology**

[Hyperlink](#)

**Gene Summary**

The PDHX gene encodes component X of the pyruvate dehydrogenase (PDH) complex. For a detailed description of the pyruvate dehydrogenase complex, see MIM 300502. The mammalian PDH complex differs from that in E. coli and from the other mammalian alpha-keto acid dehydrogenases by the presence of a 53-kD protein called protein X. Component X binds to the E3 (MIM 238331) component of the PDH complex (Robinson et al., 1990 [PubMed 2112155]; Aral et al., 1997 [PubMed 9399911]).[supplied by OMIM]

**Other Designations**

E3-binding protein|pyruvate dehydrogenase complex, lipoyl-containing component X