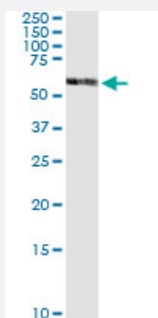


# PDHX (Human) IP-WB Antibody Pair

Catalog # H00008050-PW1

Size 1 Set

## Applications



Immunoprecipitation of PDHX transfected lysate using rabbit polyclonal anti-PDHX and Protein A Magnetic Bead ([U0007](#)), and immunoblotted with mouse purified polyclonal anti-PDHX.

## Specification

<b>Product Description</b>	This IP-WB antibody pair set comes with one antibody for immunoprecipitation and another to detect the precipitated protein in western blot.
<b>Reactivity</b>	Human
<b>Interspecies Antigen Sequence</b>	Mouse (85)
<b>Quality Control Testing</b>	Immunoprecipitation-Western Blot (IP-WB) Immunoprecipitation of PDHX transfected lysate using rabbit polyclonal anti-PDHX and Protein A Magnetic Bead ( <a href="#">U0007</a> ), and immunoblotted with mouse purified polyclonal anti-PDHX.
<b>Supplied Product</b>	Antibody pair set content: 1. Antibody pair for IP: rabbit polyclonal anti-PDHX (300 ul) 2. Antibody pair for WB: mouse purified polyclonal anti-PDHX (50 ug)
<b>Storage Instruction</b>	Store reagents of the antibody pair set at -20°C or lower. Please aliquot to avoid repeated freeze thaw cycle. Reagents should be returned to -20°C storage immediately after use.

## Applications

- Immunoprecipitation-Western Blot

[Protocol Download](#)

## Gene Info — PDHX

**Entrez GeneID** [8050](#)

**Gene Name** PDHX

**Gene Alias** DLDBP, E3BP, OPDX, PDX1, proX

**Gene Description** pyruvate dehydrogenase complex, component X

**Omim ID** [245349 608769](#)

**Gene Ontology** [Hyperlink](#)

**Gene Summary** The PDHX gene encodes component X of the pyruvate dehydrogenase (PDH) complex. For a detailed description of the pyruvate dehydrogenase complex, see MIM 300502. The mammalian PDH complex differs from that in E. coli and from the other mammalian alpha-keto acid dehydrogenases by the presence of a 53-kD protein called protein X. Component X binds to the E3 (MIM 238331) component of the PDH complex (Robinson et al., 1990 [PubMed 2112155]; Aral et al., 1997 [PubMed 9399911]).[supplied by OMIM]

**Other Designations** E3-binding protein|pyruvate dehydrogenase complex, lipoyl-containing component X