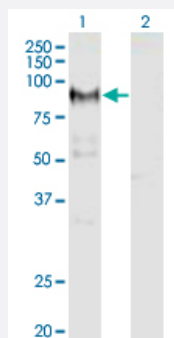


ADAM12 monoclonal antibody (M01), clone 1G3

Catalog # H00008038-M01

Size 100 ug

Applications

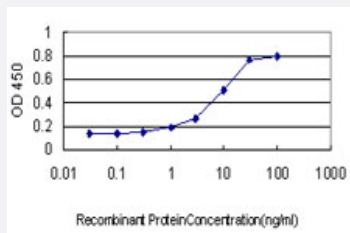


Western Blot (Transfected lysate)

Western Blot analysis of ADAM12 expression in transfected 293T cell line by ADAM12 monoclonal antibody (M01), clone 1G3.

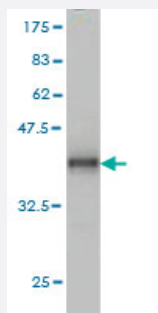
Lane 1: ADAM12 transfected lysate (Predicted MW: 80.4 kDa).

Lane 2: Non-transfected lysate.



Sandwich ELISA (Recombinant protein)

Detection limit for recombinant GST tagged ADAM12 is approximately 0.3ng/ml as a capture antibody.



Western Blot detection against Immunogen (36.41 kDa) .

Specification

Product Description

Mouse monoclonal antibody raised against a partial recombinant ADAM12.

Immunogen	ADAM12 (NP_003465, 208 a.a. ~ 304 a.a) partial recombinant protein with GST tag. MW of the GST tag alone is 26 KDa.
Sequence	ETLKATKYVELVIVADNREFQRQGDLEKVKQRLIEIANHVDKFYRPLNIRMLVGVEVWNDMDKCSVSQDPFTSLHEFLDWRKMKLLPRKSHDNAQ
Host	Mouse
Reactivity	Human
Interspecies Antigen Sequence	Mouse (96)
Isotype	IgG3 Kappa
Quality Control Testing	Antibody Reactive Against Recombinant Protein. Western Blot detection against Immunogen (36.41 KDa) .
Storage Buffer	In 1x PBS, pH 7.4
Storage Instruction	Store at -20°C or lower. Aliquot to avoid repeated freezing and thawing.

Applications

- Western Blot (Transfected lysate)

Western Blot analysis of ADAM12 expression in transfected 293T cell line by ADAM12 monoclonal antibody (M01), clone 1G3.

Lane 1: ADAM12 transfected lysate (Predicted MW: 80.4 KDa).

Lane 2: Non-transfected lysate.

[Protocol Download](#)

- Western Blot (Recombinant protein)

[Protocol Download](#)

- Sandwich ELISA (Recombinant protein)

Detection limit for recombinant GST tagged ADAM12 is approximately 0.3ng/ml as a capture antibody.

[Protocol Download](#)

- ELISA

Gene Info — ADAM12

Entrez GeneID	8038
GeneBank Accession#	NM_003474
Protein Accession#	NP_003465
Gene Name	ADAM12
Gene Alias	MCMP, MCMPMltna, MLTN, MLTNA
Gene Description	ADAM metallopeptidase domain 12
Omim ID	602714
Gene Ontology	Hyperlink
Gene Summary	This gene encodes a member of the ADAM (a disintegrin and metalloprotease) protein family. Members of this family are membrane-anchored proteins structurally related to snake venom disintegrins, and have been implicated in a variety of biological processes involving cell-cell and cell-matrix interactions, including fertilization, muscle development, and neurogenesis. This gene has two alternatively spliced transcripts: a shorter secreted form and a longer membrane-bound form. The shorter form is found to stimulate myogenesis. [provided by RefSeq]
Other Designations	OTTHUMP00000020727 OTTHUMP00000046766 a disintegrin and metalloproteinase domain 12 (meltrin alpha) meltrin alpha

Publication Reference

- [TM4SF3 promotes esophageal carcinoma metastasis via upregulating ADAM12m expression.](#)

Zhou Z, Ran YL, Hu H, Pan J, Li ZF, Chen LZ, Sun LC, Peng L, Zhao XL, Yu L, Sun LX, Yang ZH.

Clinical & Experimental Metastasis 2008 Mar; 25(5):537.

Application: WB, Human, Human esophageal carcinoma cell line EC9706, and KYSE150 cells

Disease

- [Alzheimer disease](#)
- [Diabetes Mellitus](#)
- [Disease Progression](#)
- [Genetic Predisposition to Disease](#)

- [Osteoarthritis](#)
- [Overweight](#)
- [Tobacco Use Disorder](#)