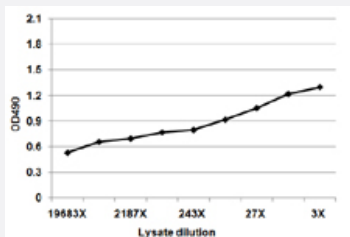


ADAM12 (Human) Matched Antibody Pair

Catalog # H00008038-AP51 Size 1 Set

Applications



Sandwich ELISA detection sensitivity ranging from approximately 243x to 3x dilution of the ADAM12 293T overexpression lysate (non-denatured).

Specification

Product Description	This antibody pair set comes with a matched antibody pair to detect and quantify the protein level of human ADAM12.
Reactivity	Human
Interspecies Antigen Sequence	Mouse (83)
Quality Control Testing	Standard curve using ADAM12 293T overexpression lysate (non-denatured) as an analyte. Sandwich ELISA detection sensitivity ranging from approximately 243x to 3x dilution of the ADAM12 293T overexpression lysate (non-denatured).
Supplied Product	Antibody pair set content: 1. Capture antibody: mouse monoclonal anti-ADAM12, IgG1 Kappa (100 ug) 2. Detection antibody: rabbit purified polyclonal anti-ADAM12 (50 ug) *Reagents are sufficient for at least 3-5 x 96 well plates using recommended protocols.
Storage Instruction	Store reagents of the antibody pair set at -20°C or lower. Please aliquot to avoid repeated freeze thaw cycle. Reagents should be returned to -20°C storage immediately after use.

Applications

- ELISA Pair (Transfected lysate)

[Protocol Download](#)

Gene Info — ADAM12

Entrez GeneID [8038](#)

Gene Name ADAM12

Gene Alias MCMP, MCMPMItna, MLTN, MLTNA

Gene Description ADAM metalloproteinase domain 12

Omim ID [602714](#)

Gene Ontology [Hyperlink](#)

Gene Summary This gene encodes a member of the ADAM (a disintegrin and metalloprotease) protein family. Members of this family are membrane-anchored proteins structurally related to snake venom disintegrins, and have been implicated in a variety of biological processes involving cell-cell and cell-matrix interactions, including fertilization, muscle development, and neurogenesis. This gene has two alternatively spliced transcripts: a shorter secreted form and a longer membrane-bound form. The shorter form is found to stimulate myogenesis. [provided by RefSeq]

Other Designations OTTHUMP00000020727|OTTHUMP00000046766|a disintegrin and metalloproteinase domain 12 (meltrin alpha)|meltrin alpha

Disease

- [Alzheimer disease](#)
- [Diabetes Mellitus](#)
- [Disease Progression](#)
- [Genetic Predisposition to Disease](#)
- [Osteoarthritis](#)
- [Overweight](#)
- [Tobacco Use Disorder](#)