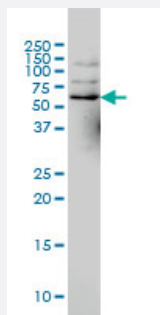


NCOA4 monoclonal antibody (M02), clone 1A2

Catalog # H00008031-M02

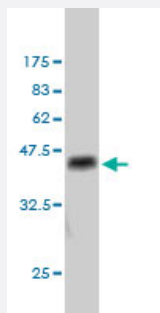
Size 100 ug

Applications



Western Blot (Cell lysate)

NCOA4 monoclonal antibody (M02), clone 1A2 Western Blot analysis of NCOA4 expression in HeLa S3 NE (Cat # L013V3).



Western Blot detection against Immunogen (37.84 KDa) .

Specification

Product Description	Mouse monoclonal antibody raised against a partial recombinant NCOA4.
Immunogen	NCOA4 (NP_005428, 505 a.a. ~ 614 a.a) partial recombinant protein with GST tag. MW of the GST tag alone is 26 KDa.
Sequence	EGSPKEVPGTEDRAGKQKFKSPMNTSWCSFNTADWVLPGKKMGNLSQLSSGEDKWLLRKKA QEVLLNSPLQEEHNFPDHYGLPAVCDLFACMQLKVDKEKWLYRTPLQM
Host	Mouse
Reactivity	Human

Interspecies Antigen Sequence	Mouse (82); Rat (81)
Isotype	IgG1 kappa
Quality Control Testing	Antibody Reactive Against Recombinant Protein. Western Blot detection against Immunogen (37.84 KDa) .
Storage Buffer	In 1x PBS, pH 7.4
Storage Instruction	Store at -20°C or lower. Aliquot to avoid repeated freezing and thawing.

Applications

- Western Blot (Cell lysate)

NCOA4 monoclonal antibody (M02), clone 1A2 Western Blot analysis of NCOA4 expression in Hela S3 NE (Cat # L013V3).

[Protocol Download](#)

- Western Blot (Recombinant protein)

[Protocol Download](#)

- ELISA

Gene Info — NCOA4

Entrez GeneID	8031
GeneBank Accession#	NM_005437
Protein Accession#	NP_005428
Gene Name	NCOA4
Gene Alias	ARA70, DKFZp762E1112, ELE1, PTC3, RFG
Gene Description	nuclear receptor coactivator 4
Omim ID	188550 601984
Gene Ontology	Hyperlink

Gene Summary

This gene encodes an androgen receptor coactivator. The encoded protein interacts with the androgen receptor in a ligand-dependent manner to enhance its transcriptional activity. Chromosomal translocations between this gene and the ret tyrosine kinase gene, also located on chromosome 10, have been associated with papillary thyroid carcinoma. Alternatively spliced transcript variants have been described. Pseudogenes are present on chromosomes 4, 5, 10, and 14. [provided by RefSeq]

Other Designations

ELE1/ret TK|OTTHUMP00000019601|OTTHUMP00000019603|RET-activating gene ELE1

Pathway

- [Pathways in cancer](#)
- [Thyroid cancer](#)

Disease

- [Alzheimer Disease](#)
- [Genetic Predisposition to Disease](#)
- [Thyroid Neoplasms](#)