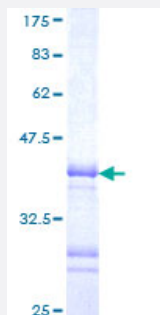


LHX3 (Human) Recombinant Protein (Q01)

Catalog # H00008022-Q01

Size 25 ug, 10 ug

Applications



Specification

Product Description	Human LHX3 partial ORF (NP_055379, 228 a.a. - 316 a.a.) recombinant protein with GST-tag at N-terminal.
Sequence	RWGQYFRNMKRSRGGSKSDKDSVQEGQDSDAEVSFPDEPSLAEMGPANGLYGSLGEPTQALG RPSGALGNFSLEHGGLAGPEQYRELRP
Host	Wheat Germ (in vitro)
Theoretical MW (kDa)	35.53
Interspecies Antigen Sequence	Mouse (84); Rat (84)
Preparation Method	in vitro wheat germ expression system
Purification	Glutathione Sepharose 4 Fast Flow
Quality Control Testing	12.5% SDS-PAGE Stained with Coomassie Blue.
Storage Buffer	50 mM Tris-HCl, 10 mM reduced Glutathione, pH=8.0 in the elution buffer.
Storage Instruction	Store at -80°C. Aliquot to avoid repeated freezing and thawing.
Note	Best use within three months from the date of receipt of this protein.

Applications

- Enzyme-linked Immunoabsorbent Assay
- Western Blot (Recombinant protein)
- Antibody Production
- Protein Array

Gene Info — LHX3

Entrez GeneID	8022
GeneBank Accession#	NM_014564
Protein Accession#	NP_055379
Gene Name	LHX3
Gene Alias	DKFZp762A2013, LIM3, M2-LHX3
Gene Description	LIM homeobox 3
Omim ID	262600 600577
Gene Ontology	Hyperlink
Gene Summary	This gene encodes a member a large protein family which carry the LIM domain, a unique cysteine-rich zinc-binding domain. The encoded protein is a transcription factor that is required for pituitary development and motor neuron specification. Mutations in this gene have been associated with a syndrome of combined pituitary hormone deficiency and rigid cervical spine. Two transcripts variants encoding distinct isoforms have been identified for this gene. [provided by RefSeq]
Other Designations	LIM homeobox protein 3 LIM/homeodomain protein LHX3 OTTHUMP00000022567 OTTHUMP0000022568

Disease

- [Hypopituitarism](#)