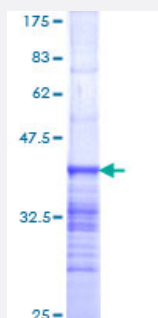


NUP214 (Human) Recombinant Protein (Q01)

Catalog # H00008021-Q01

Size 25 ug, 10 ug

Applications



Specification

Product Description	Human NUP214 partial ORF (NP_005076, 1 a.a. - 97 a.a.) recombinant protein with GST-tag at N-terminal.
Sequence	MGDEMDAMIPEREMKDFQFRALKKVRIFDSPEELPKERSLLAVSNKYGLVFAGGASGLQIFPTK NLLIQNKPGDDPNKIVDKVQGLLVPMKFPIHH
Host	Wheat Germ (in vitro)
Theoretical MW (kDa)	36.41
Interspecies Antigen Sequence	Mouse (86); Rat (87)
Preparation Method	in vitro wheat germ expression system
Purification	Glutathione Sepharose 4 Fast Flow
Quality Control Testing	12.5% SDS-PAGE Stained with Coomassie Blue.
Storage Buffer	50 mM Tris-HCl, 10 mM reduced Glutathione, pH=8.0 in the elution buffer.
Storage Instruction	Store at -80°C. Aliquot to avoid repeated freezing and thawing.
Note	Best use within three months from the date of receipt of this protein.

Applications

- Enzyme-linked Immunoabsorbent Assay
- Western Blot (Recombinant protein)
- Antibody Production
- Protein Array

Gene Info — NUP214

Entrez GeneID [8021](#)

GeneBank Accession# [NM_005085](#)

Protein Accession# [NP_005076](#)

Gene Name NUP214

Gene Alias CAIN, CAN, D9S46E, MGC104525, N214

Gene Description nucleoporin 214kDa

Omim ID [114350 601626](#)

Gene Ontology [Hyperlink](#)

Gene Summary

The nuclear pore complex is a massive structure that extends across the nuclear envelope, forming a gateway that regulates the flow of macromolecules between the nucleus and the cytoplasm. Nucleoporins are the main components of the nuclear pore complex in eukaryotic cells. This gene is a member of the FG-repeat-containing nucleoporins. The protein encoded by this gene is localized to the cytoplasmic face of the nuclear pore complex where it is required for proper cell cycle progression and nucleocytoplasmic transport. The 3' portion of this gene forms a fusion gene with the DEK gene on chromosome 6 in a t(6,9) translocation associated with acute myeloid leukemia and myelodysplastic syndrome. [provided by RefSeq]

Other Designations

CAN protein, putative oncogene|OTTHUMP00000064563|nuclear pore complex protein Nup214|nucleoporin 214kD (CAIN)|p250

Disease

- [Tobacco Use Disorder](#)