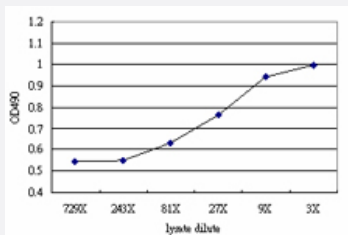


BRD3 (Human) Matched Antibody Pair

Catalog # H00008019-AP51

Size 1 Set

Applications



Sandwich ELISA detection sensitivity ranging from approximately 81x to 3x dilution of the BRD3 293T overexpression lysate (non-denatured).

Specification

Product Description	This antibody pair set comes with a matched antibody pair to detect and quantify the protein level of human BRD3.
Reactivity	Human
Interspecies Antigen Sequence	Mouse (95); Rat (95)
Quality Control Testing	Standard curve using BRD3 293T overexpression lysate (non-denatured) as an analyte. Sandwich ELISA detection sensitivity ranging from approximately 81x to 3x dilution of the BRD3 293 T overexpression lysate (non-denatured).
Supplied Product	Antibody pair set content: 1. Capture antibody: mouse monoclonal anti-BRD3 (100 ug) 2. Detection antibody: rabbit purified polyclonal anti-BRD3 (50 ug) *Reagents are sufficient for at least 3-5 x 96 well plates using recommended protocols.
Storage Instruction	Store reagents of the antibody pair set at -20°C or lower. Please aliquot to avoid repeated freeze thaw cycle. Reagents should be returned to -20°C storage immediately after use.

Applications

- ELISA Pair (Transfected lysate)

[Protocol Download](#)

Gene Info — BRD3

Entrez GeneID	8019
Gene Name	BRD3
Gene Alias	FLJ23227, FLJ41328, KIAA0043, ORFX, RING3L
Gene Description	bromodomain containing 3
Omim ID	601541
Gene Ontology	Hyperlink
Gene Summary	This gene was identified based on its homology to the gene encoding the RING3 protein, a serine /threonine kinase. The gene localizes to 9q34, a region which contains several major histocompatibility complex (MHC) genes. The function of the encoded protein is not known. [provided by RefSeq]
Other Designations	OTTHUMP00000022724 RING3-like bromodomain containing protein 3 bromodomain-containing 3