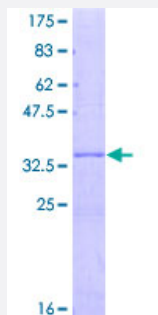


TUSC3 (Human) Recombinant Protein (Q01)

Catalog # H00007991-Q01

Size 25 ug, 10 ug

Applications



Specification

Product Description	Human TUSC3 partial ORF (NP_839952.1, 52 a.a. - 140 a.a.) recombinant protein with GST-tag at N-terminal.
Sequence	KVEQLMEWSSRRSIFRMNGDKFRKFIKAPPRNYSMVMFTALQPQRQCSVCRQANEEYQILANS WRYSSAFCNKLFFSMVDYDEGTDVF
Host	Wheat Germ (in vitro)
Theoretical MW (kDa)	35.53
Interspecies Antigen Sequence	Mouse (98); Rat (98)
Preparation Method	in vitro wheat germ expression system
Purification	Glutathione Sepharose 4 Fast Flow
Quality Control Testing	12.5% SDS-PAGE Stained with Coomassie Blue.
Storage Buffer	50 mM Tris-HCl, 10 mM reduced Glutathione, pH=8.0 in the elution buffer.
Storage Instruction	Store at -80°C. Aliquot to avoid repeated freezing and thawing.
Note	Best use within three months from the date of receipt of this protein.

Applications

- Enzyme-linked Immunoabsorbent Assay
- Western Blot (Recombinant protein)
- Antibody Production
- Protein Array

Gene Info — TUSC3

Entrez GeneID [7991](#)

GeneBank Accession# [NM_178234](#)

Protein Accession# [NP_839952.1](#)

Gene Name TUSC3

Gene Alias D8S1992, M33, MGC13453, MRT7, N33, OST3A

Gene Description tumor suppressor candidate 3

Omim ID [176807](#) [601385](#)

Gene Ontology [Hyperlink](#)

Gene Summary This gene is a candidate tumor suppressor gene. It is located within a homozygously deleted region of a metastatic prostate cancer. The gene is expressed in most nonlymphoid human tissues including prostate, lung, liver, and colon. Expression was also detected in many epithelial tumor cell lines. Two transcript variants encoding distinct isoforms have been identified for this gene. [provided by RefSeq]

Other Designations OTTHUMP00000120036|Putative prostate cancer tumor suppressor