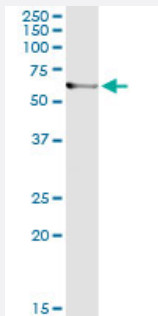


ARHGEF5 (Human) IP-WB Antibody Pair

Catalog # H00007984-PW1

Size 1 Set

Applications



Immunoprecipitation of ARHGEF5 transfected lysate using mouse monoclonal anti-ARHGEF5 and Protein A Magnetic Bead ([U0007](#)), and immunoblotted with rabbit polyclonal anti-ARHGEF5.

Specification

Product Description	This IP-WB antibody pair set comes with one antibody for immunoprecipitation and another to detect the precipitated protein in western blot.
Reactivity	Human
Interspecies Antigen Sequence	Mouse (93); Rat (94)
Quality Control Testing	Immunoprecipitation-Western Blot (IP-WB) Immunoprecipitation of ARHGEF5 transfected lysate using mouse monoclonal anti-ARHGEF5 and Protein A Magnetic Bead (U0007), and immunoblotted with rabbit polyclonal anti-ARHGEF5.
Supplied Product	Antibody pair set content: 1. Antibody pair for IP: mouse monoclonal anti-ARHGEF5 (300 ug) 2. Antibody pair for WB: rabbit polyclonal anti-ARHGEF5 (50 ul)
Storage Instruction	Store reagents of the antibody pair set at -20°C or lower. Please aliquot to avoid repeated freeze thaw cycle. Reagents should be returned to -20°C storage immediately after use.

Applications

- Immunoprecipitation-Western Blot

[Protocol Download](#)

Gene Info — ARHGEF5

Entrez GeneID	7984
Gene Name	ARHGEF5
Gene Alias	DKFZp686N1969, GEF5, P60, TIM, TIM1
Gene Description	Rho guanine nucleotide exchange factor (GEF) 5
Omim ID	600888
Gene Ontology	Hyperlink
Gene Summary	Rho GTPases play a fundamental role in numerous cellular processes initiated by extracellular stimuli that work through G protein coupled receptors. The encoded protein may form a complex with G proteins and stimulate Rho-dependent signals. This protein may be involved in the control of cytoskeletal organization. [provided by RefSeq]
Other Designations	guanine nucleotide regulatory protein TIM rho guanine nucleotide exchange factor 5 transforming immortalized mammary oncogene

Disease

- [Cardiovascular Diseases](#)
- [Diabetes Mellitus](#)
- [Edema](#)