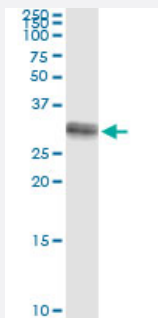


# HSD17B8 (Human) IP-WB Antibody Pair

Catalog # H00007923-PW1

Size 1 Set

## Applications



Immunoprecipitation of HSD17B8 transfected lysate using rabbit polyclonal anti-HSD17B8 and Protein A Magnetic Bead ([U0007](#)), and immunoblotted with mouse purified polyclonal anti-HSD17B8.

## Specification

<b>Product Description</b>	This IP-WB antibody pair set comes with one antibody for immunoprecipitation and another to detect the precipitated protein in western blot.
<b>Reactivity</b>	Human
<b>Interspecies Antigen Sequence</b>	Mouse (86); Rat (86)
<b>Quality Control Testing</b>	Immunoprecipitation-Western Blot (IP-WB) Immunoprecipitation of HSD17B8 transfected lysate using rabbit polyclonal anti-HSD17B8 and Protein A Magnetic Bead ( <a href="#">U0007</a> ), and immunoblotted with mouse purified polyclonal anti-HSD17B8.
<b>Supplied Product</b>	Antibody pair set content: 1. Antibody pair for IP: rabbit polyclonal anti-HSD17B8 (300 ul) 2. Antibody pair for WB: mouse purified polyclonal anti-HSD17B8 (50 ug)
<b>Storage Instruction</b>	Store reagents of the antibody pair set at -20°C or lower. Please aliquot to avoid repeated freeze thaw cycle. Reagents should be returned to -20°C storage immediately after use.

## Applications

- Immunoprecipitation-Western Blot

[Protocol Download](#)

## Gene Info — HSD17B8

**Entrez GeneID** [7923](#)

**Gene Name** HSD17B8

**Gene Alias** D6S2245E, FABG, FABGL, H2-KE6, HKE6, KE6, RING2, SDR30C1, dJ1033B10.9

**Gene Description** hydroxysteroid (17-beta) dehydrogenase 8

**Omim ID** [601417](#)

**Gene Ontology** [Hyperlink](#)

**Gene Summary** In mice, the Ke6 protein is a 17-beta-hydroxysteroid dehydrogenase that can regulate the concentration of biologically active estrogens and androgens. It is preferentially an oxidative enzyme and inactivates estradiol, testosterone, and dihydrotestosterone. However, the enzyme has some reductive activity and can synthesize estradiol from estrone. The protein encoded by this gene is similar to Ke6 and is a member of the short-chain dehydrogenase superfamily. An alternatively spliced transcript of this gene has been detected, but the full-length nature of this variant has not been determined. [provided by RefSeq]

**Other Designations** 17-beta-HSD 8|17-beta-hydroxysteroid dehydrogenase 8|OTTHUMP00000029153|beta-ketoacyl-[acyl-carrier-protein] reductase-like|estradiol 17 beta-dehydrogenase 8|estrogen 17-oxidoreductase|short chain dehydrogenase/reductase family 30C, member 1

## Pathway

- [Androgen and estrogen metabolism](#)
- [Metabolic pathways](#)

## Disease

- [Abortion](#)
- [Breast Neoplasms](#)
- [Cardiovascular Diseases](#)

- [Diabetes Mellitus](#)
- [Edema](#)
- [Genetic Predisposition to Disease](#)
- [Lupus Erythematosus](#)