

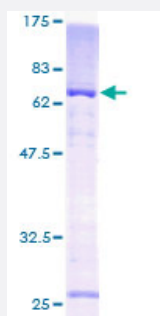
Full-Length

KCNAB1 (Human) Recombinant Protein (P01)

Catalog # H00007881-P01

Size 25 ug, 10 ug

Applications



Specification

Product Description

Human KCNAB1 full-length ORF (AAH43166, 1 a.a. - 401 a.a.) recombinant protein with GST-tag at N-terminal.

Sequence

MQVSIACTEHNLKSRNGEDRLLSKQSSTAPNVVNAARAKFRTVAIARSLGTFTPQHHISLKESTAK
QTGMKYRNLGKSGLRVSCGLGTWVTFGGQISDEVAERLMTIAYESGVNLFDTAEVYAAGKAEVIL
GSIKKKGWRRSSLVITTKLYWGGKAETERGLSRKHIIIEGLKGSLLQRLQLEYVDVVFANRPDSNTPM
EEIVRAMTHVINQGMAMYWGTSRWSAMEIMEAYSVARQFNMIPPVCEQAEYHLFQREKVEVQLP
ELYHKIGVGAMTWSPLACGIISGKYGNGVPESSRASLKCQWLKERIVSEEGRKQQNKLKDLSP
ERLGCTLPQLAVAWCLRNEGVSSVLLGSSTPEQLIENLGAIQVLPKMTSHVVNEIDNLRNKPYSK
KDYRS

Host

Wheat Germ (in vitro)

Theoretical MW (kDa)

69.85

Preparation Method

[in vitro wheat germ expression system](#)

Purification

Glutathione Sepharose 4 Fast Flow

Quality Control Testing

12.5% SDS-PAGE Stained with Coomassie Blue.

Storage Buffer

50 mM Tris-HCl, 10 mM reduced Glutathione, pH=8.0 in the elution buffer.

Storage Instruction

Store at -80°C. Aliquot to avoid repeated freezing and thawing.

Note

Best use within three months from the date of receipt of this protein.

Applications

- Enzyme-linked Immunoabsorbent Assay
- Western Blot (Recombinant protein)
- Antibody Production
- Protein Array

Gene Info — KCNAB1

Entrez GeneID [7881](#)

GeneBank Accession# [BC043166](#)

Protein Accession# [AAH43166](#)

Gene Name KCNAB1

Gene Alias AKR6A3, KCNA1B, KV-BETA-1, Kvb1.3, hKvBeta3, hKvb3

Gene Description potassium voltage-gated channel, shaker-related subfamily, beta member 1

Omim ID [601141](#)

Gene Ontology [Hyperlink](#)

Gene Summary Potassium channels represent the most complex class of voltage-gated ion channels from both functional and structural standpoints. Their diverse functions include regulating neurotransmitter release, heart rate, insulin secretion, neuronal excitability, epithelial electrolyte transport, smooth muscle contraction, and cell volume. Four sequence-related potassium channel genes - shaker, shaw, shab, and shal - have been identified in Drosophila, and each has been shown to have human homolog(s). This gene encodes a member of the potassium channel, voltage-gated, shaker-related subfamily. This member includes three distinct isoforms which are encoded by three alternatively spliced transcript variants of this gene. These three isoforms are beta subunits, which form heteromultimeric complex with alpha subunits and modulate the activity of the pore-forming alpha subunits. [provided by RefSeq]

Other Designations potassium channel beta 3 chain|potassium channel beta3 subunit|potassium channel shaker chain beta 1a|potassium voltage-gated channel beta subunit|voltage-gated potassium channel beta-1 subunit

Disease

- [Epilepsy](#)
- [Genetic Predisposition to Disease](#)
- [Seizures](#)
- [Syndrome](#)
- [Tobacco Use Disorder](#)