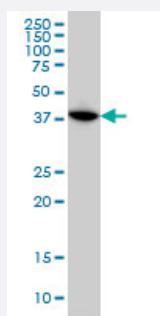


# MAPKAPK3 monoclonal antibody (M02), clone 2B5

Catalog # H00007867-M02

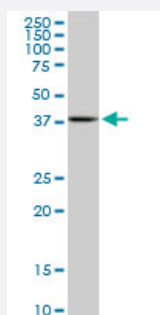
Size 100 ug

## Applications



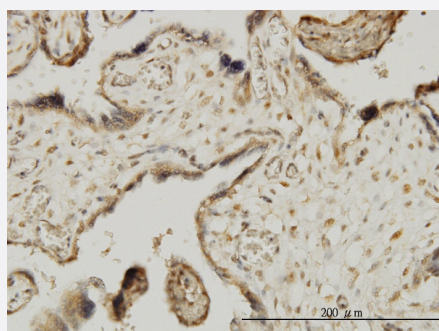
### Western Blot (Cell lysate)

MAPKAPK3 monoclonal antibody (M02), clone 2B5 Western Blot analysis of MAPKAPK3 expression in HeLa ( Cat # L013V1 ).



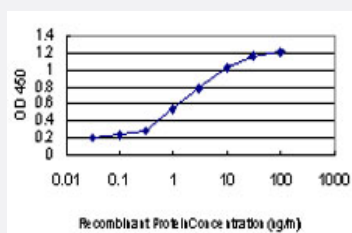
### Western Blot (Cell lysate)

MAPKAPK3 monoclonal antibody (M02), clone 2B5. Western Blot analysis of MAPKAPK3 expression in NIH/3T3 ( Cat # L018V1 ).



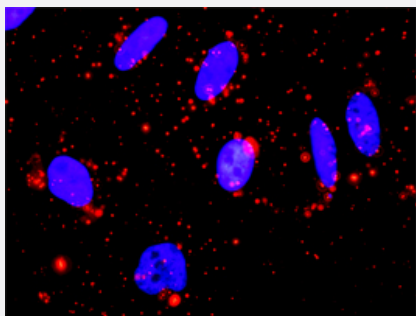
### Immunohistochemistry (Formalin/PFA-fixed paraffin-embedded sections)

Immunoperoxidase of monoclonal antibody to MAPKAPK3 on formalin-fixed paraffin-embedded human placenta. [antibody concentration 3 ug/ml]



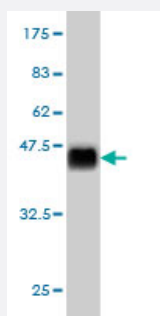
### Sandwich ELISA (Recombinant protein)

Detection limit for recombinant GST tagged MAPKAPK3 is approximately 0.03ng/ml as a capture antibody.



### *In situ Proximity Ligation Assay (Cell)*

Proximity Ligation Analysis of protein-protein interactions between MAPK13 and MAPKAPK3. HeLa cells were stained with anti-MAPK13 rabbit purified polyclonal 1:1200 and anti-MAPKAPK3 mouse monoclonal antibody 1:50. Each red dot represents the detection of protein-protein interaction complex, and nuclei were counterstained with DAPI (blue).



Western Blot detection against Immunogen (37.84 KDa) .

## Specification

<b>Product Description</b>	Mouse monoclonal antibody raised against a partial recombinant MAPKAPK3.
<b>Immunogen</b>	MAPKAPK3 (AAH01662, 272 a.a. ~ 382 a.a) partial recombinant protein with GST tag. MW of the GST tag alone is 26 KDa.
<b>Sequence</b>	EVSEDAKQLIRLLKTDPTERTLTITQFMNHPWINQSMVVPQTPLHTARVLQEDKDHWDVEVKEEMT SALATMRVDYDQVKIKDLKTSNNRLLNKRRKKQAGSSSASQGCNNQ
<b>Host</b>	Mouse
<b>Reactivity</b>	Human, Mouse
<b>Interspecies Antigen Sequence</b>	Mouse (96); Rat (94)
<b>Isotype</b>	IgG2a Kappa
<b>Quality Control Testing</b>	Antibody Reactive Against Recombinant Protein. Western Blot detection against Immunogen (37.84 KDa) .
<b>Storage Buffer</b>	In 1x PBS, pH 7.4
<b>Storage Instruction</b>	Store at -20°C or lower. Aliquot to avoid repeated freezing and thawing.

## Applications

- Western Blot (Cell lysate)

MAPKAPK3 monoclonal antibody (M02), clone 2B5 Western Blot analysis of MAPKAPK3 expression in HeLa ( Cat # L013V1 ).

[Protocol Download](#)

- Western Blot (Cell lysate)

MAPKAPK3 monoclonal antibody (M02), clone 2B5. Western Blot analysis of MAPKAPK3 expression in NIH/3T3 ( Cat # L018V1 ).

[Protocol Download](#)

- Western Blot (Recombinant protein)

[Protocol Download](#)

- Immunohistochemistry (Formalin/PFA-fixed paraffin-embedded sections)

Immunoperoxidase of monoclonal antibody to MAPKAPK3 on formalin-fixed paraffin-embedded human placenta. [antibody concentration 3 ug/ml]

[Protocol Download](#)

- Sandwich ELISA (Recombinant protein)

Detection limit for recombinant GST tagged MAPKAPK3 is approximately 0.03ng/ml as a capture antibody.

[Protocol Download](#)

- ELISA

- *In situ* Proximity Ligation Assay (Cell)

Proximity Ligation Analysis of protein-protein interactions between MAPK13 and MAPKAPK3. HeLa cells were stained with anti-MAPK13 rabbit purified polyclonal 1:1200 and anti-MAPKAPK3 mouse monoclonal antibody 1:50. Each red dot represents the detection of protein-protein interaction complex, and nuclei were counterstained with DAPI (blue).

## Gene Info — MAPKAPK3

Entrez GeneID [7867](#)

GeneBank Accession# [BC001662](#)

Protein Accession#	<a href="#">AAH01662</a>
Gene Name	MAPKAPK3
Gene Alias	3PK, MAPKAP3
Gene Description	mitogen-activated protein kinase-activated protein kinase 3
Omim ID	<a href="#">602130</a>
Gene Ontology	<a href="#">Hyperlink</a>
Gene Summary	<p>This gene encodes a member of the Ser/Thr protein kinase family. This kinase functions as a mitogen-activated protein kinase (MAP kinase)- activated protein kinase. MAP kinases are also known as extracellular signal-regulated kinases (ERKs), act as an integration point for multiple biochemical signals. This kinase was shown to be activated by growth inducers and stress stimulation of cells. In vitro studies demonstrated that ERK, p38 MAP kinase and Jun N-terminal kinase were all able to phosphorylate and activate this kinase, which suggested the role of this kinase as an integrative element of signaling in both mitogen and stress responses. This kinase was reported to interact with, phosphorylate and repress the activity of E47, which is a basic helix-loop-helix transcription factor known to be involved in the regulation of tissue-specific gene expression and cell differentiation. [provided by RefSeq]</p>
Other Designations	MAPKAP kinase 3

## Pathway

- [MAPK signaling pathway](#)
- [VEGF signaling pathway](#)

## Disease

- [Cardiovascular Diseases](#)
- [Diabetes Mellitus](#)
- [Edema](#)
- [Genetic Predisposition to Disease](#)
- [Hepatitis C](#)
- [Schizophrenia](#)