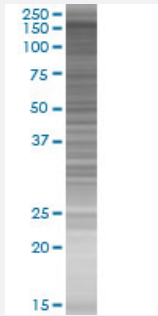


BRPF1 293T Cell Transient Overexpression Lysate(Denatured)

Catalog # H00007862-T01

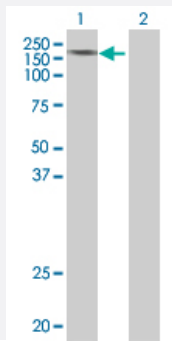
Size 100 uL

Applications



SDS-PAGE Gel

BRPF1 transfected lysate.



Western Blot

Lane 1: BRPF1 transfected lysate (138.2 KDa)

Lane 2: Non-transfected lysate.

Specification

Transfected Cell Line	293T
Plasmid	pCMV-BRPF1 full-length
Host	Human
Theoretical MW (kDa)	138.2
Interspecies Antigen Sequence	Mouse (95); Rat (95)

Quality Control Testing

Transient overexpression cell lysate was tested with Anti-BRPF1 antibody ([H00007862-B01](#)) by Western Blots.
SDS-PAGE Gel
BRPF1 transfected lysate.
Western Blot
Lane 1: BRPF1 transfected lysate (138.2 KDa)
Lane 2: Non-transfected lysate.

Storage Buffer

1X Sample Buffer (50 mM Tris-HCl, 2% SDS, 10% glycerol, 300 mM 2-mercaptoethanol, 0.01% Bromophenol blue)

Storage Instruction

Store at -80°C. Aliquot to avoid repeated freezing and thawing.

Applications

- Western Blot

Gene Info — BRPF1

Entrez GeneID[7862](#)**GeneBank Accession#**[NM_001003694.1](#)**Protein Accession#**[-](#)**Gene Name**

BRPF1

Gene Alias

BR140

Gene Description

bromodomain and PHD finger containing, 1

Omim ID[602410](#)**Gene Ontology**[Hyperlink](#)**Gene Summary**

The protein encoded by this gene is expressed ubiquitously and at the highest level in testes and spermatogonia. The protein is localized within nuclei, and it is very similar in structure to two zinc finger proteins, AF10 and AF17. It is suggested that these proteins form a family of regulatory proteins. Two alternatively spliced transcript variants encoding different isoforms have been found for this gene. [provided by RefSeq]

Other Designations

bromodomain and PHD finger-containing protein 1|bromodomain-containing protein, 140kD|perigrin

Disease

- [Cardiovascular Diseases](#)
- [Diabetes Mellitus](#)
- [Edema](#)
- [Kidney Failure](#)