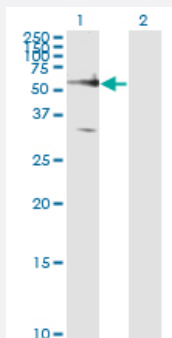


# FZD5 monoclonal antibody (M01), clone 6A3

Catalog # H00007855-M01

Size 100 ug

## Applications

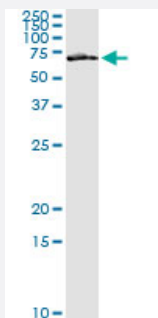


### Western Blot (Transfected lysate)

Western Blot analysis of FZD5 expression in transfected 293T cell line by FZD5 monoclonal antibody (M01), clone 6A3.

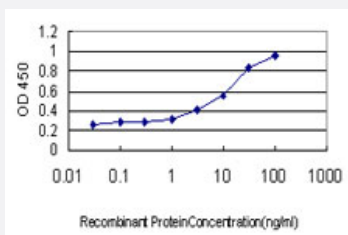
Lane 1: FZD5 transfected lysate (64.5 kDa).

Lane 2: Non-transfected lysate.



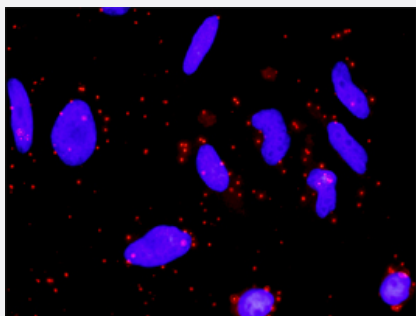
### Immunoprecipitation

Immunoprecipitation of FZD5 transfected lysate using anti-FZD5 monoclonal antibody and Protein A Magnetic Bead, and immunoblotted with FZD5 MaxPab rabbit polyclonal antibody.



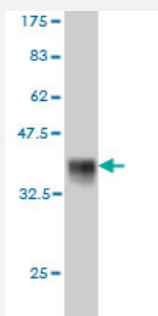
### Sandwich ELISA (Recombinant protein)

Detection limit for recombinant GST tagged FZD5 is approximately 0.3 ng/ml as a capture antibody.



### *In situ Proximity Ligation Assay (Cell)*

Proximity Ligation Analysis of protein-protein interactions between WNT5A and FZD5. HeLa cells were stained with anti-WNT5A rabbit purified polyclonal 1:1200 and anti-FZD5 mouse monoclonal antibody 1:50. Each red dot represents the detection of protein-protein interaction complex, and nuclei were counterstained with DAPI (blue).



Western Blot detection against Immunogen (35.64 KDa) .

## Specification

<b>Product Description</b>	Mouse monoclonal antibody raised against a partial recombinant FZD5.
<b>Immunogen</b>	FZD5 (ENSP00000354607, 72 a.a. ~ 161 a.a) partial recombinant protein with GST tag. MW of the GST tag alone is 26 KDa.
<b>Sequence</b>	PLVEIQCSPLDLRFFLCSTMYTICLPDYHKPLPPCRSVCERAKAGCSPLMRQYGFAPWPERMSCDR LPVLGRDAEVLCDYNRSEATTAPPR
<b>Host</b>	Mouse
<b>Reactivity</b>	Human
<b>Isotype</b>	IgG2a Kappa
<b>Quality Control Testing</b>	Antibody Reactive Against Recombinant Protein. Western Blot detection against Immunogen (35.64 KDa) .
<b>Storage Buffer</b>	In 1x PBS, pH 7.4
<b>Storage Instruction</b>	Store at -20°C or lower. Aliquot to avoid repeated freezing and thawing.

## Applications

- Western Blot (Transfected lysate)

Western Blot analysis of FZD5 expression in transfected 293T cell line by FZD5 monoclonal antibody (M01), clone 6A3.

Lane 1: FZD5 transfected lysate(64.5 KDa).

Lane 2: Non-transfected lysate.

[Protocol Download](#)

- Western Blot (Recombinant protein)

[Protocol Download](#)

- Immunoprecipitation

Immunoprecipitation of FZD5 transfected lysate using anti-FZD5 monoclonal antibody and Protein A Magnetic Bead, and immunoblotted with FZD5 MaxPab rabbit polyclonal antibody.

[Protocol Download](#)

- Sandwich ELISA (Recombinant protein)

Detection limit for recombinant GST tagged FZD5 is approximately 0.3ng/ml as a capture antibody.

[Protocol Download](#)

- ELISA

- In situ* Proximity Ligation Assay (Cell)

Proximity Ligation Analysis of protein-protein interactions between WNT5A and FZD5. HeLa cells were stained with anti-WNT5A rabbit purified polyclonal 1:1200 and anti-FZD5 mouse monoclonal antibody 1:50. Each red dot represents the detection of protein-protein interaction complex, and nuclei were counterstained with DAPI (blue).

## Gene Info — FZD5

Entrez GeneID [7855](#)

GeneBank Accession# [NM\\_003468](#)

Protein Accession# [ENSP00000354607](#)

Gene Name FZD5

Gene Alias C2orf31, DKFZp434E2135, HFZ5, MGC129692

Gene Description frizzled homolog 5 (Drosophila)

Omim ID [601723](#)

## Gene Ontology

[Hyperlink](#)

## Gene Summary

Members of the 'frizzled' gene family encode 7-transmembrane domain proteins that are receptors for Wnt signaling proteins. The FZD5 protein is believed to be the receptor for the Wnt5A ligand. [provided by RefSeq]

## Other Designations

Wnt receptor|frizzled 5|seven-transmembrane receptor frizzled-5

## Publication Reference

- [Frizzled-5: a high affinity receptor for secreted frizzled-related protein-2 activation of nuclear factor of activated T-cells c3 signaling to promote angiogenesis.](#)

Peterson YK, Nasarre P, Bonilla IV, Hilliard E, Samples J, Morinelli TA, Hill EG, Klauber-DeMore N.

Angiogenesis 2017 Aug; 20(4):615.

Application: IP-WB, Mouse, 2H11 cells

## Pathway

- [Basal cell carcinoma](#)
- [Colorectal cancer](#)
- [Melanogenesis](#)
- [Pathways in cancer](#)
- [Wnt signaling pathway](#)

## Disease

- [Genetic Predisposition to Disease](#)
- [Tuberculosis](#)