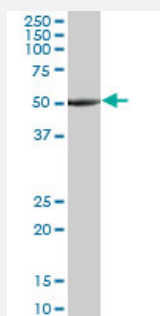


# TUBA1A monoclonal antibody (M06), clone 2D2

Catalog # H00007846-M06

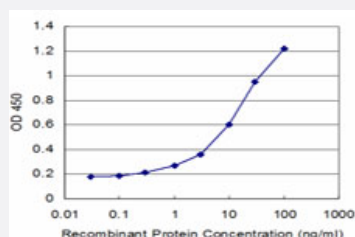
Size 100 ug

## Applications



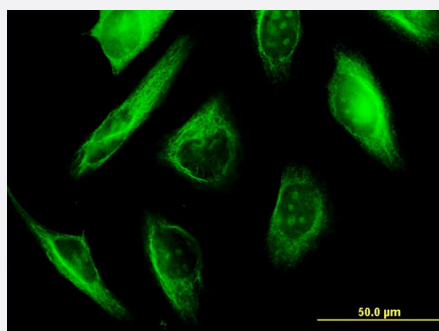
### Western Blot (Cell lysate)

TUBA1A monoclonal antibody (M06), clone 2D2. Western Blot analysis of TUBA1A expression in HepG2 ( Cat # L019V1 ).



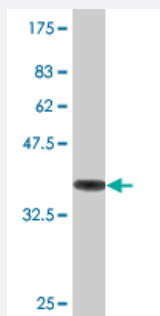
### Sandwich ELISA (Recombinant protein)

Detection limit for recombinant GST tagged TUBA1A is approximately 0.3ng/ml as a capture antibody.



### Immunofluorescence

Immunofluorescence of monoclonal antibody to TUBA1A on HeLa cell .  
[antibody concentration 10 ug/ml]



Western Blot detection against Immunogen (36.74 KDa) .

## Specification

<b>Product Description</b>	Mouse monoclonal antibody raised against a partial recombinant TUBA1A.
<b>Immunogen</b>	TUBA1A (NP_006000, 352 a.a. ~ 451 a.a) partial recombinant protein with GST tag. MW of the GST tag alone is 26 KDa.
<b>Sequence</b>	KVGINYQPPTVVPGGDLAKVQRAVCMLSNTTAIEAWARLDHKFDLMYAKRAFVHWYVGEGMEE GEFSEAREDMAALEKDYEEVGVDSEGEGEREEEGEEY
<b>Host</b>	Mouse
<b>Reactivity</b>	Human
<b>Isotype</b>	IgG2a Kappa
<b>Quality Control Testing</b>	Antibody Reactive Against Recombinant Protein. Western Blot detection against Immunogen (36.74 KDa) .
<b>Storage Buffer</b>	In 1x PBS, pH 7.4
<b>Storage Instruction</b>	Store at -20°C or lower. Aliquot to avoid repeated freezing and thawing.

## Applications

- Western Blot (Cell lysate)

TUBA1A monoclonal antibody (M06), clone 2D2. Western Blot analysis of TUBA1A expression in HepG2 ( Cat # L019V1 ).

[Protocol Download](#)

- Western Blot (Recombinant protein)

[Protocol Download](#)

- Sandwich ELISA (Recombinant protein)

Detection limit for recombinant GST tagged TUBA1A is approximately 0.3ng/ml as a capture antibody.

[Protocol Download](#)

- ELISA

- Immunofluorescence

Immunofluorescence of monoclonal antibody to TUBA1A on HeLa cell . [antibody concentration 10 ug/ml]

## Gene Info — TUBA1A

Entrez GeneID [7846](#)

GeneBank Accession# [NM\\_006009](#)

Protein Accession# [NP\\_006000](#)

Gene Name TUBA1A

Gene Alias B-ALPHA-1, FLJ25113, LIS3, TUBA3

Gene Description tubulin, alpha 1a

Omim ID [602529 611603](#)

Gene Ontology [Hyperlink](#)

**Gene Summary**

Microtubules of the eukaryotic cytoskeleton perform essential and diverse functions and are composed of a heterodimer of alpha and beta tubulins. The genes encoding these microtubule constituents belong to the tubulin superfamily, which is composed of six distinct families. Genes from the alpha, beta and gamma tubulin families are found in all eukaryotes. The alpha and beta tubulins represent the major components of microtubules, while gamma tubulin plays a critical role in the nucleation of microtubule assembly. There are multiple alpha and beta tubulin genes, which are highly conserved among species. This gene encodes alpha tubulin and is highly similar to mouse and rat Tuba1 gene. Northern blotting studies have shown that the gene expression is predominantly found in morphologically differentiated neurologic cells. This gene is one of three alpha-tubulin genes in a cluster on chromosome 12q. [provided by RefSeq]

**Other Designations** hum-a-tub1|hum-a-tub2|tubulin, alpha 3|tubulin, alpha, brain-specific

## Publication Reference

- [Germline CBL mutations cause developmental abnormalities and predispose to juvenile myelomonocytic leukemia.](#)

Niemeyer CM, Kang MW, Shin DH, Furlan I, Erlacher M, Bunin NJ, Bunda S, Finklestein JZ, Sakamoto KM, Gorr TA, Mehta P, Schmid I, Kropshofer G, Corbacioglu S, Lang PJ, Klein C, Schlegel PG, Heinzmann A, Schneider M, Stary J, van den Heuvel-Eibrink MM, Hasle H, Locatelli F, Sakai D, Archambeault S, Chen L, Russell RC, Sybingco SS, Ohh M, Braun BS, Flotho C, Loh ML.

Nature Genetics 2010 Sep; 42(9):794.

Application: WB-Ce, WB-Tr, Human, BaF3-EpoR, HEK 293 cells

## Pathway

- [Gap junction](#)
- [Pathogenic Escherichia coli infection - EHEC](#)

## Disease

- [Lissencephaly](#)
- [Mental Disorders](#)
- [Neuropsychological Tests](#)
- [Schizophrenia](#)