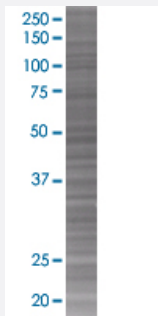


# DAP3 293T Cell Transient Overexpression Lysate(Denatured)

Catalog # H00007818-T02

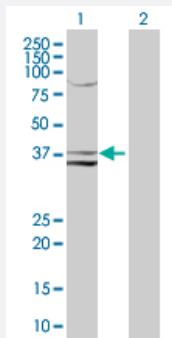
Size 100 uL

## Applications



### SDS-PAGE Gel

DAP3 transfected lysate



### Western Blot

Lane 1: DAP3 transfected lysate ( 45.6 KDa).

Lane 2: Non-transfected lysate.

## Specification

Transfected Cell Line	293T
Plasmid	pCMV-DAP3 full-length
Host	Human
Theoretical MW (kDa)	45.6
Interspecies Antigen Sequence	Mouse (81); Rat (82)

**Quality Control Testing**

Transient overexpression cell lysate was tested with Anti-DAP3 antibody ([H00007818-B02](#)) by Western Blots.  
SDS-PAGE Gel  
DAP3 transfected lysate  
Western Blot  
Lane 1: DAP3 transfected lysate ( 45.6 KDa).  
Lane 2: Non-transfected lysate.

**Storage Buffer**

1X Sample Buffer (50 mM Tris-HCl, 2% SDS, 10% glycerol, 300 mM 2-mercaptoethanol, 0.01% Bromophenol blue)

**Storage Instruction**

Store at -80°C. Aliquot to avoid repeated freezing and thawing.

## Applications

- Western Blot

## Gene Info — DAP3

**Entrez GeneID**[7818](#)**GeneBank Accession#**[NM\\_004632](#)**Protein Accession#**[NP\\_004623](#)**Gene Name**

DAP3

**Gene Alias**

DAP-3, DKFZp686G12159, MGC126058, MGC126059, MRP-S29, MRPS29, bMRP-10

**Gene Description**

death associated protein 3

**Omim ID**[602074](#)**Gene Ontology**[Hyperlink](#)

**Gene Summary**

Mammalian mitochondrial ribosomal proteins are encoded by nuclear genes and help in protein synthesis within the mitochondrion. Mitochondrial ribosomes (mitoribosomes) consist of a small 28S subunit and a large 39S subunit. They have an estimated 75% protein to rRNA composition compared to prokaryotic ribosomes, where this ratio is reversed. Another difference between mammalian mitoribosomes and prokaryotic ribosomes is that the latter contain a 5S rRNA. Among different species, the proteins comprising the mitoribosome differ greatly in sequence, and sometimes in biochemical properties, which prevents easy recognition by sequence homology. This gene encodes a 28S subunit protein that also participates in apoptotic pathways which are initiated by tumor necrosis factor-alpha, Fas ligand, and gamma interferon. This protein potentially binds ATP/GTP and might be a functional partner of the mitoribosomal protein S27. Splice variants that differ in the 5' UTR have been found for this gene; both variants encode the same protein. Pseudogenes corresponding to this gene are found on chromosomes 1q and 2q. [provided by RefSeq]

**Other Designations**

OTTHUMP00000033480|OTTHUMP00000033481|death-associated protein 3|mitochondrial 28S ribosomal protein S29

**Disease**

- [Asthma](#)
- [Genetic Predisposition to Disease](#)
- [Prostatic Neoplasms](#)