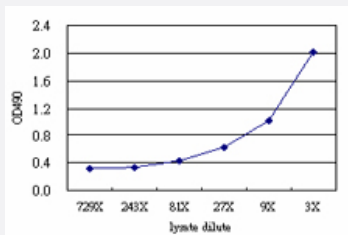


# ZNF232 (Human) Matched Antibody Pair

Catalog # H00007775-AP51

Size 1 Set

## Applications



Sandwich ELISA detection sensitivity ranging from approximately 81x to 3x dilution of the ZNF232 293T overexpression lysate (non-denatured).

## Specification

### Product Description

This antibody pair set comes with a matched antibody pair to detect and quantify the protein level of human ZNF232.

### Reactivity

Human

### Quality Control Testing

Standard curve using ZNF232 293T overexpression lysate (non-denatured) as an analyte. Sandwich ELISA detection sensitivity ranging from approximately 81x to 3x dilution of the ZNF232 293T overexpression lysate (non-denatured).

### Supplied Product

Antibody pair set content:  
 1. Capture antibody: mouse monoclonal anti-ZNF232 (100 ug)  
 2. Detection antibody: rabbit purified polyclonal anti-ZNF232 (50 ug)  
 \*Reagents are sufficient for at least 3-5 x 96 well plates using recommended protocols.

### Storage Instruction

Store reagents of the antibody pair set at -20°C or lower. Please aliquot to avoid repeated freeze thaw cycle. Reagents should be returned to -20°C storage immediately after use.

## Applications

- ELISA Pair (Transfected lysate)

[Protocol Download](#)

## Gene Info — ZNF232

Entrez GeneID	<a href="#">7775</a>
Gene Name	ZNF232
Gene Alias	ZSCAN11
Gene Description	zinc finger protein 232
Gene Ontology	<a href="#">Hyperlink</a>
Other Designations	OTTHUMP00000125302