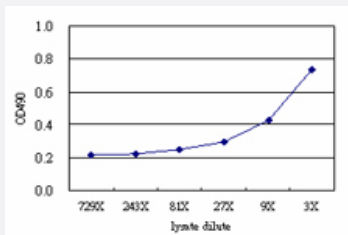


ZNF215 (Human) Matched Antibody Pair

Catalog # H00007762-AP51

Size 1 Set

Applications



Sandwich ELISA detection sensitivity ranging from approximately 27x to 3x dilution of the ZNF215 293T overexpression lysate (non-denatured).

Specification

Product Description	This antibody pair set comes with a matched antibody pair to detect and quantify the protein level of human ZNF215.
Reactivity	Human
Quality Control Testing	Standard curve using ZNF215 293T overexpression lysate (non-denatured) as an analyte. Sandwich ELISA detection sensitivity ranging from approximately 27x to 3x dilution of the ZNF215 293T overexpression lysate (non-denatured).
Supplied Product	Antibody pair set content: 1. Capture antibody: mouse monoclonal anti-ZNF215 (100 ug) 2. Detection antibody: rabbit purified polyclonal anti-ZNF215 (50 ug) *Reagents are sufficient for at least 3-5 x 96 well plates using recommended protocols.
Storage Instruction	Store reagents of the antibody pair set at -20°C or lower. Please aliquot to avoid repeated freeze thaw cycle. Reagents should be returned to -20°C storage immediately after use.

Applications

- ELISA Pair (Transfected lysate)

[Protocol Download](#)

Gene Info — ZNF215

Entrez GeneID	7762
Gene Name	ZNF215
Gene Alias	BAZ2, ZKSCAN11
Gene Description	zinc finger protein 215
Omim ID	605016
Gene Ontology	Hyperlink
Other Designations	-