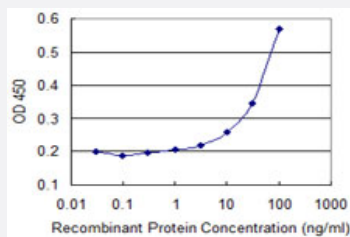


ZNF157 monoclonal antibody (M04), clone 3G3

Catalog # H00007712-M04

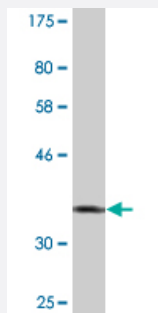
Size 100 ug

Applications



Sandwich ELISA (Recombinant protein)

Detection limit for recombinant GST tagged ZNF157 is 3 ng/ml as a capture antibody.



Western Blot detection against Immunogen (37.18 KDa) .

Specification

Product Description	Mouse monoclonal antibody raised against a partial recombinant ZNF157.
Immunogen	ZNF157 (NP_003437.1, 402 a.a. ~ 505 a.a) partial recombinant protein with GST tag. MW of the GST tag alone is 26 KDa.
Sequence	IEHQRMHSGEKPYESCEGKIFSMKSLCQHRRTHTGEKPYESCEGNAFYVKVRLIEHQRIHTG ERPFECQECGKAFCRKAHLTEHQRTHTGWSWRCTMKKAS
Host	Mouse
Reactivity	Human

Interspecies Antigen Sequence	Rat (82)
Isotype	IgG2a Kappa
Quality Control Testing	Antibody Reactive Against Recombinant Protein. Western Blot detection against Immunogen (37.18 KDa) .
Storage Buffer	In 1x PBS, pH 7.4
Storage Instruction	Store at -20°C or lower. Aliquot to avoid repeated freezing and thawing.

Applications

- Western Blot (Recombinant protein)

[Protocol Download](#)

- Sandwich ELISA (Recombinant protein)

Detection limit for recombinant GST tagged ZNF157 is 3 ng/ml as a capture antibody.

[Protocol Download](#)

- ELISA

Gene Info — ZNF157

Entrez GeneID	7712
GeneBank Accession#	NM_003446
Protein Accession#	NP_003437.1
Gene Name	ZNF157
Gene Alias	HZF22
Gene Description	zinc finger protein 157
Omim ID	300024
Gene Ontology	Hyperlink

Gene Summary

This gene product is a likely zinc finger family transcription factor. It contains KRAB-A and KRAB-B domains that act as transcriptional repressors in related proteins, and multiple zinc finger DNA binding motifs and finger linking regions characteristic of the Kruppel family. This gene is part of a gene cluster on chromosome Xp11.23. [provided by RefSeq]

Other Designations

OTTHUMP00000023210