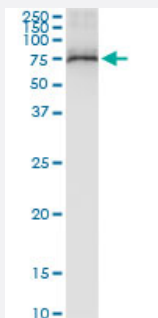


TRIM25 (Human) IP-WB Antibody Pair

Catalog # H00007706-PW1

Size 1 Set

Applications



Immunoprecipitation of TRIM25 transfected lysate using rabbit polyclonal anti-TRIM25 and Protein A Magnetic Bead ([U0007](#)), and immunoblotted with mouse purified polyclonal anti-TRIM25.

Specification

Product Description	This IP-WB antibody pair set comes with one antibody for immunoprecipitation and another to detect the precipitated protein in western blot.
Reactivity	Human
Interspecies Antigen Sequence	Mouse (73); Rat (71)
Quality Control Testing	Immunoprecipitation-Western Blot (IP-WB) Immunoprecipitation of TRIM25 transfected lysate using rabbit polyclonal anti-TRIM25 and Protein A Magnetic Bead (U0007), and immunoblotted with mouse purified polyclonal anti-TRIM25.
Supplied Product	Antibody pair set content: 1. Antibody pair for IP: rabbit polyclonal anti-TRIM25 (300 ul) 2. Antibody pair for WB: mouse purified polyclonal anti-TRIM25 (50 ug)
Storage Instruction	Store reagents of the antibody pair set at -20°C or lower. Please aliquot to avoid repeated freeze thaw cycle. Reagents should be returned to -20°C storage immediately after use.

Applications

- Immunoprecipitation-Western Blot

[Protocol Download](#)

Gene Info — TRIM25

Entrez GeneID [7706](#)

Gene Name TRIM25

Gene Alias EFP, RNF147, Z147, ZNF147

Gene Description tripartite motif-containing 25

Omim ID [600453](#)

Gene Ontology [Hyperlink](#)

Gene Summary The protein encoded by this gene is a member of the tripartite motif (TRIM) family. The TRIM motif includes three zinc-binding domains, a RING, a B-box type 1 and a B-box type 2, and a coiled-coil region. The protein localizes to the cytoplasm. The presence of potential DNA-binding and dimerization-transactivation domains suggests that this protein may act as a transcription factor, similar to several other members of the TRIM family. Expression of the gene is upregulated in response to estrogen, and it is thought to mediate estrogen actions in breast cancer as a primary response gene. [provided by RefSeq]

Other Designations estrogen-responsive finger protein|tripartite motif protein TRIM25|zinc finger protein 147 (estrogen-responsive finger protein)|zinc finger protein-147

Disease

- [Diabetes Mellitus](#)