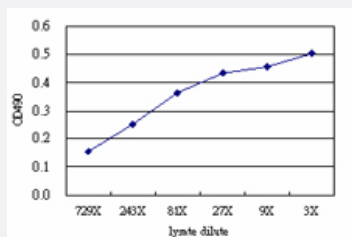


TRIM25 (Human) Matched Antibody Pair

Catalog # H00007706-AP51

Size 1 Set

Applications



Sandwich ELISA detection sensitivity ranging from approximately 729x to 3x dilution of the TRIM25 293T overexpression lysate (non-denatured).

Specification

Product Description	This antibody pair set comes with a matched antibody pair to detect and quantify the protein level of human TRIM25.
Reactivity	Human
Interspecies Antigen Sequence	Mouse (73); Rat (71)
Quality Control Testing	Standard curve using TRIM25 293T overexpression lysate (non-denatured) as an analyte. Sandwich ELISA detection sensitivity ranging from approximately 729x to 3x dilution of the TRIM25 293T overexpression lysate (non-denatured).
Supplied Product	Antibody pair set content: 1. Capture antibody: mouse monoclonal anti-TRIM25 (100 ug) 2. Detection antibody: rabbit purified polyclonal anti-TRIM25 (50 ug) *Reagents are sufficient for at least 3-5 x 96 well plates using recommended protocols.
Storage Instruction	Store reagents of the antibody pair set at -20°C or lower. Please aliquot to avoid repeated freeze thaw cycle. Reagents should be returned to -20°C storage immediately after use.

Applications

- ELISA Pair (Transfected lysate)

[Protocol Download](#)

Gene Info — TRIM25

Entrez GeneID [7706](#)

Gene Name TRIM25

Gene Alias EFP, RNF147, Z147, ZNF147

Gene Description tripartite motif-containing 25

Omim ID [600453](#)

Gene Ontology [Hyperlink](#)

Gene Summary The protein encoded by this gene is a member of the tripartite motif (TRIM) family. The TRIM motif includes three zinc-binding domains, a RING, a B-box type 1 and a B-box type 2, and a coiled-coil region. The protein localizes to the cytoplasm. The presence of potential DNA-binding and dimerization-transactivation domains suggests that this protein may act as a transcription factor, similar to several other members of the TRIM family. Expression of the gene is upregulated in response to estrogen, and it is thought to mediate estrogen actions in breast cancer as a primary response gene. [provided by RefSeq]

Other Designations estrogen-responsive finger protein|tripartite motif protein TRIM25|zinc finger protein 147 (estrogen-responsive finger protein)|zinc finger protein-147

Disease

- [Diabetes Mellitus](#)