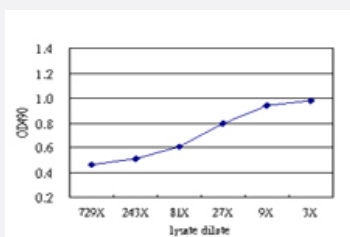


ZSCAN20 (Human) Matched Antibody Pair

Catalog # H00007579-AP51

Size 1 Set

Applications



Sandwich ELISA detection sensitivity ranging from approximately 81x to 3x dilution of the ZSCAN20 293T overexpression lysate (non-denatured).

Specification

Product Description	This antibody pair set comes with a matched antibody pair to detect and quantify the protein level of human ZSCAN20.
Reactivity	Human
Interspecies Antigen Sequence	Mouse (67)
Quality Control Testing	Standard curve using ZSCAN20 293T overexpression lysate (non-denatured) as an analyte. Sandwich ELISA detection sensitivity ranging from approximately 81x to 3x dilution of the ZSCAN20 293T overexpression lysate (non-denatured).
Supplied Product	Antibody pair set content: 1. Capture antibody: mouse monoclonal anti-ZSCAN20 (100 ug) 2. Detection antibody: rabbit purified polyclonal anti-ZSCAN20 (50 ug) *Reagents are sufficient for at least 3-5 x 96 well plates using recommended protocols.
Storage Instruction	Store reagents of the antibody pair set at -20°C or lower. Please aliquot to avoid repeated freeze thaw cycle. Reagents should be returned to -20°C storage immediately after use.

Applications

- [ELISA Pair \(Transfected lysate\)](#)

[Protocol Download](#)

Gene Info — ZSCAN20

Entrez GeneID [7579](#)

Gene Name ZSCAN20

Gene Alias KOX29, ZFP-31, ZNF31, ZNF360

Gene Description zinc finger and SCAN domain containing 20

Gene Ontology [Hyperlink](#)

Other Designations OTTHUMP00000179080|zinc finger protein 31|zinc finger protein 360

Disease

- [Tobacco Use Disorder](#)