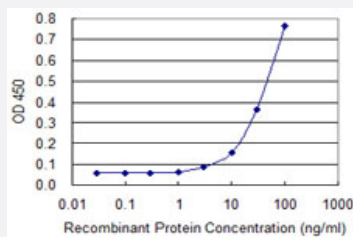


ZIC3 monoclonal antibody (M01), clone 4F7

Catalog # H00007547-M01

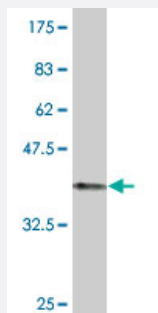
Size 100 ug

Applications



Sandwich ELISA (Recombinant protein)

Detection limit for recombinant GST tagged ZIC3 is approximately 10ng/ml as a capture antibody.



Western Blot detection against Immunogen (35.86 KDa) .

Specification

| | |
|----------------------------|---|
| Product Description | Mouse monoclonal antibody raised against a full length recombinant ZIC3. |
| Immunogen | ZIC3 (NP_003404.1, 182 a.a. ~ 274 a.a) full-length recombinant protein with GST tag. MW of the GST tag alone is 26 KDa. |
| Sequence | NQVHLGLRGELFGRADPYRPVASPRTPYAAGAQFPNYSPMNMNMGVNVAHHGPGAFFRYMR QPIKQELSCKWIDEAQLSRPKKSCDRTFST |
| Host | Mouse |
| Reactivity | Human |

| | |
|-------------------------------|--|
| Interspecies Antigen Sequence | Mouse (98) |
| Isotype | IgG2a Kappa |
| Quality Control Testing | Antibody Reactive Against Recombinant Protein. Western Blot detection against Immunogen (35.86 KDa) . |
| Storage Buffer | In 1x PBS, pH 7.4 |
| Storage Instruction | Store at -20°C or lower. Aliquot to avoid repeated freezing and thawing. |

Applications

- Western Blot (Recombinant protein)

[Protocol Download](#)

- Sandwich ELISA (Recombinant protein)

Detection limit for recombinant GST tagged ZIC3 is approximately 10ng/ml as a capture antibody.

[Protocol Download](#)

- ELISA

Gene Info — ZIC3

| | |
|---------------------|--|
| Entrez GeneID | 7547 |
| GeneBank Accession# | NM_003413 |
| Protein Accession# | NP_003404.1 |
| Gene Name | ZIC3 |
| Gene Alias | HTX, HTX1, ZNF203 |
| Gene Description | Zic family member 3 (odd-paired homolog, Drosophila) |
| Omim ID | 300265 306955 |
| Gene Ontology | Hyperlink |

Gene Summary

This gene encodes a member of the ZIC family of C2H2-type zinc finger proteins. This nuclear protein probably functions as a transcription factor in early stages of left-right body axis formation. Mutations in this gene cause X-linked visceral heterotaxy, which includes congenital heart disease and left-right axis defects in organs. [provided by RefSeq]

Other Designations

OTTHUMP00000024142|heterotaxy 1|zinc finger protein of the cerebellum 3

Disease

- [Genetic Predisposition to Disease](#)
- [Neural Tube Defects](#)