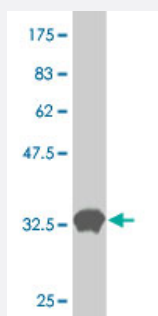


# ZIC2 monoclonal antibody (M01), clone 3C12

Catalog # H00007546-M01

Size 100 ug

## Applications



Western Blot detection against Immunogen (33.26 KDa) .

## Specification

<b>Product Description</b>	Mouse monoclonal antibody raised against a partial recombinant ZIC2.
<b>Immunogen</b>	ZIC2 (NP_009060, 151 a.a. ~ 216 a.a) partial recombinant protein with GST tag. MW of the GST tag alone is 26 KDa.
<b>Sequence</b>	SDAQGHLLFPGLPEQHGP HGSQNVLNGQMRLGLPGEVFGRSEQYRQVASPRTPDY
<b>Host</b>	Mouse
<b>Reactivity</b>	Human
<b>Interspecies Antigen Sequence</b>	Mouse (98); Rat (98)
<b>Isotype</b>	IgG2a Kappa
<b>Quality Control Testing</b>	Antibody Reactive Against Recombinant Protein. Western Blot detection against Immunogen (33.26 KDa) .
<b>Storage Buffer</b>	In 1x PBS, pH 7.4
<b>Storage Instruction</b>	Store at -20°C or lower. Aliquot to avoid repeated freezing and thawing.

## Applications

- Western Blot (Recombinant protein)

[Protocol Download](#)

- ELISA

## Gene Info — ZIC2

Entrez GeneID	<a href="#">7546</a>
GeneBank Accession#	<a href="#">NM_007129</a>
Protein Accession#	<a href="#">NP_009060</a>
Gene Name	ZIC2
Gene Alias	HPE5
Gene Description	Zic family member 2 (odd-paired homolog, Drosophila)
Omim ID	<a href="#">603073 609637</a>
Gene Ontology	<a href="#">Hyperlink</a>
Gene Summary	This gene encodes a member of the ZIC family of C2H2-type zinc finger proteins. This protein functions as a transcriptional repressor and may regulate tissue specific expression of dopamine receptor D1. Mutations in this gene cause holoprosencephaly type 5. Holoprosencephaly is the most common structural anomaly of the human brain. A polyhistidine tract polymorphism in this gene may be associated with increased risk of neural tube defects. This gene is closely linked to a gene encoding zinc finger protein of the cerebellum 5, a related family member on chromosome 13. [provided by RefSeq]
Other Designations	OTTHUMP00000018633 Zic family member 2 (odd-paired Drosophila homolog) Zinc finger protein of the cerebellum 2 zinc finger protein of the cerebellum 2

## Pathway

- [Hedgehog signaling pathway](#)

## Disease

- [Genetic Predisposition to Disease](#)
- [Neural Tube Defects](#)