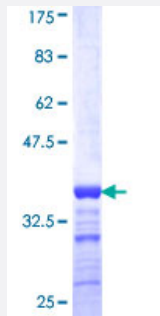


ZIC1 (Human) Recombinant Protein (Q01)

Catalog # H00007545-Q01

Size 25 ug, 10 ug

Applications



Specification

Product Description	Human ZIC1 partial ORF (NP_003403, 2 a.a. - 95 a.a.) recombinant protein with GST-tag at N-terminal.
Sequence	LLDAGPQYPAIGVTTFGASRHHSAGDVAERDVGLGINPFADGMGAFKLNPSSELASAGQTAFTSQAPGYAAAAALGHHHHPGHVGSYSSAAFN
Host	Wheat Germ (in vitro)
Theoretical MW (kDa)	36.08
Interspecies Antigen Sequence	Mouse (100); Rat (100)
Preparation Method	in vitro wheat germ expression system
Purification	Glutathione Sepharose 4 Fast Flow
Quality Control Testing	12.5% SDS-PAGE Stained with Coomassie Blue.
Storage Buffer	50 mM Tris-HCl, 10 mM reduced Glutathione, pH=8.0 in the elution buffer.
Storage Instruction	Store at -80°C. Aliquot to avoid repeated freezing and thawing.
Note	Best use within three months from the date of receipt of this protein.

Applications

- Enzyme-linked Immunoabsorbent Assay
- Western Blot (Recombinant protein)
- Antibody Production
- Protein Array

Gene Info — ZIC1

Entrez GeneID [7545](#)

GeneBank Accession# [NM_003412](#)

Protein Accession# [NP_003403](#)

Gene Name ZIC1

Gene Alias ZIC, ZNF201

Gene Description Zic family member 1 (odd-paired homolog, Drosophila)

Omim ID [600470](#)

Gene Ontology [Hyperlink](#)

Gene Summary This gene encodes a member of the ZIC family of C2H2-type zinc finger proteins. Members of this family are important during development. Aberrant expression of this gene is seen in medulloblastoma, a childhood brain tumor. This gene is closely linked to the gene encoding zinc finger protein of the cerebellum 4, a related family member on chromosome 3. This gene encodes a transcription factor that can bind and transactivate the apolipoprotein E gene. [provided by RefSeq]

Other Designations Zic family member 1 (odd-paired Drosophila homolog)|Zinc finger protein of the cerebellum 1|zinc finger protein of the cerebellum 1

Disease

- [Genetic Predisposition to Disease](#)
- [Neural Tube Defects](#)