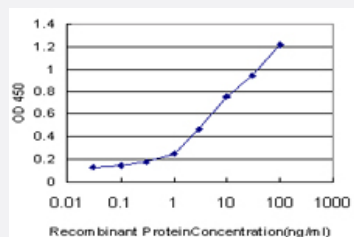


ZIC1 monoclonal antibody (M05), clone 3C1

Catalog # H00007545-M05

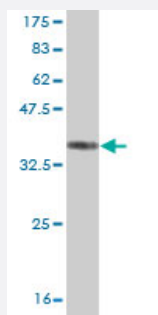
Size 100 ug

Applications



Sandwich ELISA (Recombinant protein)

Detection limit for recombinant GST tagged ZIC1 is approximately 0.1ng/ml as a capture antibody.



Western Blot detection against Immunogen (36.08 KDa) .

Specification

Product Description

Mouse monoclonal antibody raised against a partial recombinant ZIC1.

Immunogen

ZIC1 (NP_003403, 2 a.a. ~ 95 a.a) partial recombinant protein with GST tag. MW of the GST tag alone is 26 KDa.

Sequence

LLDAGPQYPAIGVTTFTGASRHHSAGDVAERDVGLGINPFADGMGAFKLNPSSEHLASAGQTAFTS
QAPGYAAAAALGHHHHHPGHVGSYSSAAFN

Host

Mouse

Reactivity

Human

Interspecies Antigen Sequence	Mouse (100); Rat (100)
Isotype	IgG2a Kappa
Quality Control Testing	Antibody Reactive Against Recombinant Protein. Western Blot detection against Immunogen (36.08 KDa) .
Storage Buffer	In 1x PBS, pH 7.4
Storage Instruction	Store at -20°C or lower. Aliquot to avoid repeated freezing and thawing.

Applications

- Western Blot (Recombinant protein)

[Protocol Download](#)

- Sandwich ELISA (Recombinant protein)

Detection limit for recombinant GST tagged ZIC1 is approximately 0.1ng/ml as a capture antibody.

[Protocol Download](#)

- ELISA

Gene Info — ZIC1

Entrez GeneID	7545
GeneBank Accession#	NM_003412
Protein Accession#	NP_003403
Gene Name	ZIC1
Gene Alias	ZIC, ZNF201
Gene Description	Zic family member 1 (odd-paired homolog, Drosophila)
Omim ID	600470
Gene Ontology	Hyperlink

Gene Summary

This gene encodes a member of the ZIC family of C2H2-type zinc finger proteins. Members of this family are important during development. Aberrant expression of this gene is seen in medulloblastoma, a childhood brain tumor. This gene is closely linked to the gene encoding zinc finger protein of the cerebellum 4, a related family member on chromosome 3. This gene encodes a transcription factor that can bind and transactivate the apolipoprotein E gene. [provided by RefSeq]

Other Designations

Zic family member 1 (odd-paired Drosophila homolog)|Zinc finger protein of the cerebellum 1|zinc finger protein of the cerebellum 1

Disease

- [Genetic Predisposition to Disease](#)
- [Neural Tube Defects](#)