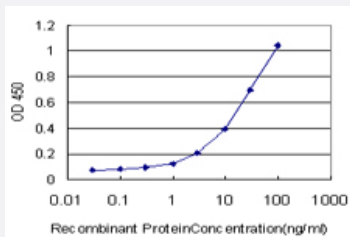


# ZIC1 monoclonal antibody (M02), clone 2D3

Catalog # H00007545-M02

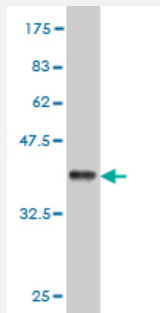
Size 100 ug

## Applications



### Sandwich ELISA (Recombinant protein)

Detection limit for recombinant GST tagged ZIC1 is approximately 1ng/ml as a capture antibody.



Western Blot detection against Immunogen (36.08 KDa) .

## Specification

### Product Description

Mouse monoclonal antibody raised against a partial recombinant ZIC1.

### Immunogen

ZIC1 (NP\_003403, 2 a.a. ~ 95 a.a) partial recombinant protein with GST tag. MW of the GST tag alone is 26 KDa.

### Sequence

LLDAGPQYPAIGVTTFTGASRHHSAGDVAERDVGLGINPFADGMGAFKLNPSSEHELASAGQTAFTS  
QAPGYAAAAALGHHHHHPGHVGSYSSAASN

### Host

Mouse

### Reactivity

Human

Interspecies Antigen Sequence	Mouse (100); Rat (100)
Isotype	IgG2a Kappa
Quality Control Testing	Antibody Reactive Against Recombinant Protein. Western Blot detection against Immunogen (36.08 KDa) .
Storage Buffer	In 1x PBS, pH 7.4
Storage Instruction	Store at -20°C or lower. Aliquot to avoid repeated freezing and thawing.

## Applications

- Western Blot (Recombinant protein)

[Protocol Download](#)

- Sandwich ELISA (Recombinant protein)

Detection limit for recombinant GST tagged ZIC1 is approximately 1ng/ml as a capture antibody.

[Protocol Download](#)

- ELISA

## Gene Info — ZIC1

Entrez GeneID	<a href="#">7545</a>
GeneBank Accession#	<a href="#">NM_003412</a>
Protein Accession#	<a href="#">NP_003403</a>
Gene Name	ZIC1
Gene Alias	ZIC, ZNF201
Gene Description	Zic family member 1 (odd-paired homolog, Drosophila)
Omim ID	<a href="#">600470</a>
Gene Ontology	<a href="#">Hyperlink</a>

**Gene Summary**

This gene encodes a member of the ZIC family of C2H2-type zinc finger proteins. Members of this family are important during development. Aberrant expression of this gene is seen in medulloblastoma, a childhood brain tumor. This gene is closely linked to the gene encoding zinc finger protein of the cerebellum 4, a related family member on chromosome 3. This gene encodes a transcription factor that can bind and transactivate the apolipoprotein E gene. [provided by RefSeq]

**Other Designations**

Zic family member 1 (odd-paired Drosophila homolog)|Zinc finger protein of the cerebellum 1|zinc finger protein of the cerebellum 1

**Disease**

- [Genetic Predisposition to Disease](#)
- [Neural Tube Defects](#)