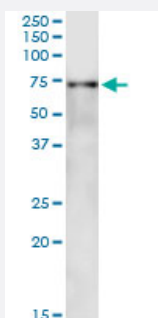


# SF1 (Human) IP-WB Antibody Pair

Catalog # H00007536-PW1

Size 1 Set

## Applications



Immunoprecipitation of SF1 transfected lysate using mouse monoclonal anti-SF1 and Protein A Magnetic Bead ([U0007](#)), and immunoblotted with mouse monoclonal anti-SF1.

## Specification

<b>Product Description</b>	This IP-WB antibody pair set comes with one antibody for immunoprecipitation and another to detect the precipitated protein in western blot.
<b>Reactivity</b>	Human
<b>Quality Control Testing</b>	Immunoprecipitation-Western Blot (IP-WB) Immunoprecipitation of SF1 transfected lysate using mouse monoclonal anti-SF1 and Protein A Magnetic Bead ( <a href="#">U0007</a> ), and immunoblotted with mouse monoclonal anti-SF1.
<b>Supplied Product</b>	Antibody pair set content: 1. Antibody pair for IP: mouse monoclonal anti-SF1 (300 ug) 2. Antibody pair for WB: mouse monoclonal anti-SF1 (50 ug)
<b>Storage Instruction</b>	Store reagents of the antibody pair set at -20°C or lower. Please aliquot to avoid repeated freeze thaw cycle. Reagents should be returned to -20°C storage immediately after use.

## Applications

- Immunoprecipitation-Western Blot

[Protocol Download](#)

## Gene Info — SF1

Entrez GeneID	<a href="#">7536</a>
Gene Name	SF1
Gene Alias	D11S636, ZFM1, ZNF162
Gene Description	splicing factor 1
Omim ID	<a href="#">601516</a>
Gene Ontology	<a href="#">Hyperlink</a>
Other Designations	OTTHUMP00000069749 OTTHUMP00000069750 OTTHUMP00000069752 zinc finger protein 162