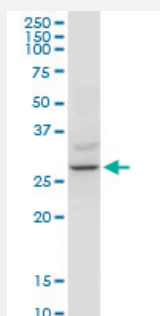


YWHAZ monoclonal antibody (M04), clone 1B3

Catalog # H00007534-M04

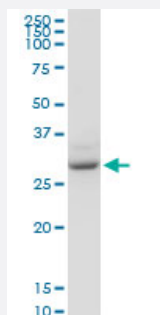
Size 100 ug

Applications



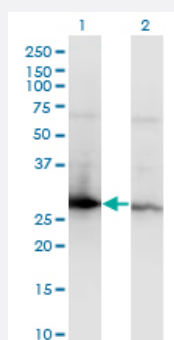
Western Blot (Tissue lysate)

YWHAZ monoclonal antibody (M04), clone 1B3. Western Blot analysis of YWHAZ expression in human kidney.



Western Blot (Cell lysate)

YWHAZ monoclonal antibody (M04), clone 1B3. Western Blot analysis of YWHAZ expression in HL-60.



Western Blot (Transfected lysate)

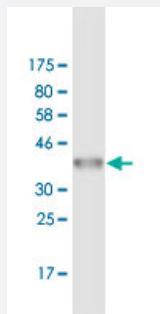
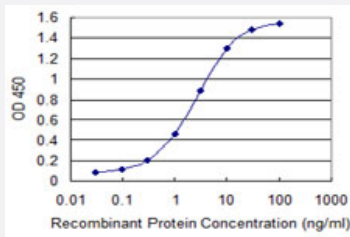
Western Blot analysis of YWHAZ expression in transfected 293T cell line by YWHAZ monoclonal antibody (M04), clone 1B3.

Lane 1: YWHAZ transfected lysate(27.7 KDa).

Lane 2: Non-transfected lysate.

Sandwich ELISA (Recombinant protein)

Detection limit for recombinant GST tagged YWHAZ is 0.03 ng/ml as a capture antibody.



Western Blot detection against Immunogen (36.63 KDa) .

Specification

Product Description	Mouse monoclonal antibody raised against a partial recombinant YWHAZ.
Immunogen	YWHAZ (NP_003397.1, 51 a.a. ~ 150 a.a) partial recombinant protein with GST tag. MW of the GST tag alone is 26 KDa.
Sequence	VVGARRSSWRVVSIEQKTEGAEEKQMQMAREYREKIETELRDICNDVLSLLEKFLIPNASQAESKV FYLMKMGDYRYLA EVAAGDDKKGIVDQSQQAYQ
Host	Mouse
Reactivity	Human
Isotype	IgG1 Kappa
Quality Control Testing	Antibody Reactive Against Recombinant Protein. Western Blot detection against Immunogen (36.63 KDa) .
Storage Buffer	In 1x PBS, pH 7.4
Storage Instruction	Store at -20°C or lower. Aliquot to avoid repeated freezing and thawing.

Applications

- Western Blot (Tissue lysate)

YWHAZ monoclonal antibody (M04), clone 1B3. Western Blot analysis of YWHAZ expression in human kidney.

[Protocol Download](#)

- Western Blot (Cell lysate)

YWHAZ monoclonal antibody (M04), clone 1B3. Western Blot analysis of YWHAZ expression in HL-60.

[Protocol Download](#)

- Western Blot (Transfected lysate)

Western Blot analysis of YWHAZ expression in transfected 293T cell line by YWHAZ monoclonal antibody (M04), clone 1B3.

Lane 1: YWHAZ transfected lysate(27.7 KDa).

Lane 2: Non-transfected lysate.

[Protocol Download](#)

- Western Blot (Recombinant protein)

[Protocol Download](#)

- Sandwich ELISA (Recombinant protein)

Detection limit for recombinant GST tagged YWHAZ is 0.03 ng/ml as a capture antibody.

[Protocol Download](#)

- ELISA

Gene Info — YWHAZ

Entrez GeneID	7534
---------------	----------------------

GeneBank Accession#	NM_003406.2
---------------------	-----------------------------

Protein Accession#	NP_003397.1
--------------------	-----------------------------

Gene Name	YWHAZ
-----------	-------

Gene Alias	KCIP-1, MGC111427, MGC126532, MGC138156
------------	---

Gene Description	tyrosine 3-monooxygenase/tryptophan 5-monooxygenase activation protein, zeta polypeptide
------------------	--

Omim ID	601288
---------	------------------------

Gene Ontology

[Hyperlink](#)

Gene Summary

This gene product belongs to the 14-3-3 family of proteins which mediate signal transduction by binding to phosphoserine-containing proteins. This highly conserved protein family is found in both plants and mammals, and this protein is 99% identical to the mouse, rat and sheep orthologs. The encoded protein interacts with IRS1 protein, suggesting a role in regulating insulin sensitivity. Several transcript variants that differ in the 5' UTR but that encode the same protein have been identified for this gene. [provided by RefSeq]

Other Designations

14-3-3 protein/cytosolic phospholipase A2|14-3-3 zeta|OTTHUMP00000165851|OTTHUMP00000165852|OTTHUMP00000165854|OTTHUMP00000165858|OTTHUMP00000165859|OTTHUMP00000165860|phospholipase A2|protein kinase C inhibitor protein-1|tyrosine 3/tryptophan 5 -monooxygenase

Pathway

- [Cell cycle](#)
- [Neurotrophin signaling pathway](#)
- [Pathogenic Escherichia coli infection - EHEC](#)

Disease

- [Alzheimer disease](#)
- [Autistic Disorder](#)
- [Genetic Predisposition to Disease](#)
- [Tobacco Use Disorder](#)