

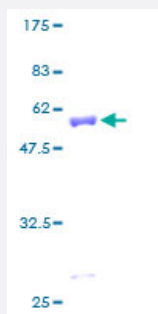
Full-Length

# YWHAB (Human) Recombinant Protein (P01)

Catalog # H00007529-P01

Size 25 ug, 10 ug

## Applications



## Specification

|                               |  |
|-------------------------------|--|
| Product Description           | Human YWHAB full-length ORF ( AAH01359, 1 a.a. - 246 a.a.) recombinant protein with GST-tag at N-terminal.   |
| Sequence                      | MTMDKSELVQKAKLAEEQAERYDDMAAAMKAVTEQGHLSNEERNLLSVAYKNVVGARRSSWR<br>VISSIEQKTERNEERQQMGKEYREKIEAELQDICNDVLELLDKYLIPNATQPESKVFYLMKMGDYFR<br>YLSEVASGDNKQTTVSNSQQAYQEAFEISKKEMQPTHPIRLGLALNFSVFYYEILNSPEKACSLAK<br>TAFDEAIAELDTLNEESYKDSTLIMQLLRDNLTLWTSENQGDEGDAGEGEN |
| Host                          | Wheat Germ (in vitro)  |
| Theoretical MW (kDa)          | 52.80  |
| Interspecies Antigen Sequence | Mouse (98); Rat (98)   |
| Preparation Method            | <a href="#">in vitro wheat germ expression system</a>  |
| Purification                  | Glutathione Sepharose 4 Fast Flow  |
| Quality Control Testing       | 12.5% SDS-PAGE Stained with Coomassie Blue.  |
| Storage Buffer                | 50 mM Tris-HCl, 10 mM reduced Glutathione, pH=8.0 in the elution buffer.   |
| Storage Instruction           | Store at -80°C. Aliquot to avoid repeated freezing and thawing.  |

## Note

Best use within three months from the date of receipt of this protein.

## Applications

- Enzyme-linked Immunoabsorbent Assay
- Western Blot (Recombinant protein)
- Antibody Production
- Protein Array

## Gene Info — YWHAB

Entrez GeneID [7529](#)

GeneBank Accession# [BC001359](#)

Protein Accession# [AAH01359](#)

Gene Name YWHAB

Gene Alias GW128, HS1, KCIP-1

Gene Description tyrosine 3-monooxygenase/tryptophan 5-monooxygenase activation protein, beta polypeptide

Omim ID [601289](#)

Gene Ontology [Hyperlink](#)

**Gene Summary** This gene encodes a protein belonging to the 14-3-3 family of proteins, members of which mediate signal transduction by binding to phosphoserine-containing proteins. This highly conserved protein family is found in both plants and mammals. The encoded protein has been shown to interact with RAF1 and CDC25 phosphatases, suggesting that it may play a role in linking mitogenic signaling and the cell cycle machinery. Two transcript variants, which encode the same protein, have been identified for this gene. [provided by RefSeq]

**Other Designations** 14-3-3 protein beta/alpha|OTTHUMP00000031075|OTTHUMP00000031076|brain protein 14-3-3, beta isoform|protein 1054|protein kinase C inhibitor protein-1

## Pathway

- [Cell cycle](#)
- [Neurotrophin signaling pathway](#)

## Disease

- [Autistic Disorder](#)