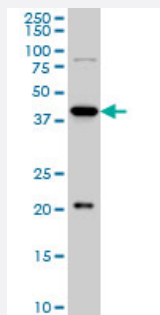


YY1 monoclonal antibody (M01), clone 2C4

Catalog # H00007528-M01

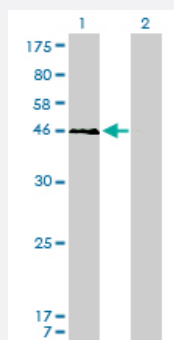
Size 100 ug

Applications



Western Blot (Cell lysate)

YY1 monoclonal antibody (M01), clone 2C4 Western Blot analysis of YY1 expression in HeLa S3 NE (Cat # L013V3).

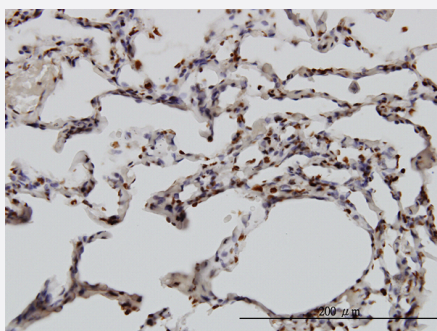


Western Blot (Transfected lysate)

Western Blot analysis of YY1 expression in transfected 293T cell line by YY1 monoclonal antibody (M01), clone 2C4.

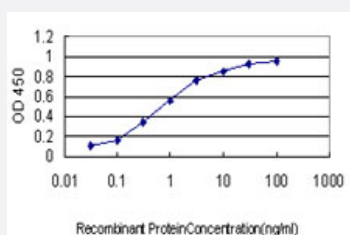
Lane 1: YY1 transfected lysate(44.7 KDa).

Lane 2: Non-transfected lysate.



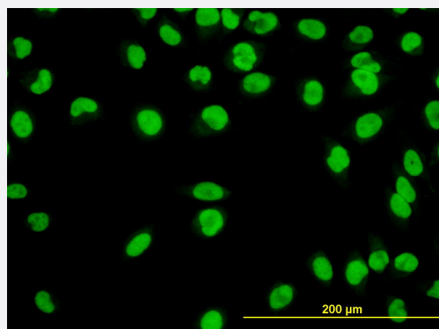
Immunohistochemistry (Formalin/PFA-fixed paraffin-embedded sections)

Immunoperoxidase of monoclonal antibody to YY1 on formalin-fixed paraffin-embedded human lung. [antibody concentration 3 ug/ml]



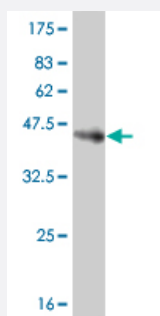
Sandwich ELISA (Recombinant protein)

Detection limit for recombinant GST tagged YY1 is approximately 0.03ng/ml as a capture antibody.



Immunofluorescence

Immunofluorescence of monoclonal antibody to YY1 on HeLa cell. [antibody concentration 10 ug/ml]



Western Blot detection against Immunogen (36.74 KDa) .

Specification

Product Description	Mouse monoclonal antibody raised against a partial recombinant YY1.
Immunogen	YY1 (NP_003394, 221 a.a. ~ 320 a.a) partial recombinant protein with GST tag. MW of the GST tag alone is 26 KDa.
Sequence	VTMWSSDEKKDIDHETVVEEQIIGENSPPDYSEYMTGKKLPPGGIPGIDLSDPKQLAEFARMKPRK IKEDDAPRTIACPHKGCTKMFRDNSAMRKHLHHTH
Host	Mouse
Reactivity	Human
Interspecies Antigen Sequence	Mouse (100); Rat (100)
Isotype	IgG1 Kappa
Quality Control Testing	Antibody Reactive Against Recombinant Protein. Western Blot detection against Immunogen (36.74 KDa) .
Storage Buffer	In 1x PBS, pH 7.4
Storage Instruction	Store at -20°C or lower. Aliquot to avoid repeated freezing and thawing.

Applications

- Western Blot (Cell lysate)

YY1 monoclonal antibody (M01), clone 2C4 Western Blot analysis of YY1 expression in Hela S3 NE (Cat # L013V3).

[Protocol Download](#)

- Western Blot (Transfected lysate)

Western Blot analysis of YY1 expression in transfected 293T cell line by YY1 monoclonal antibody (M01), clone 2C4.

Lane 1: YY1 transfected lysate(44.7 KDa).

Lane 2: Non-transfected lysate.

[Protocol Download](#)

- Western Blot (Recombinant protein)

[Protocol Download](#)

- Immunohistochemistry (Formalin/PFA-fixed paraffin-embedded sections)

Immunoperoxidase of monoclonal antibody to YY1 on formalin-fixed paraffin-embedded human lung. [antibody concentration 3 ug/ml]

[Protocol Download](#)

- Sandwich ELISA (Recombinant protein)

Detection limit for recombinant GST tagged YY1 is approximately 0.03ng/ml as a capture antibody.

[Protocol Download](#)

- ELISA

- Immunofluorescence

Immunofluorescence of monoclonal antibody to YY1 on HeLa cell. [antibody concentration 10 ug/ml]

Gene Info — YY1

Entrez GeneID	7528
---------------	----------------------

GeneBank Accession#	NM_003403
---------------------	---------------------------

Protein Accession#	NP_003394
--------------------	---------------------------

Gene Name	YY1
Gene Alias	DELTA, INO80S, NF-E1, UCRBP, YIN-YANG-1
Gene Description	YY1 transcription factor
Omim ID	600013
Gene Ontology	Hyperlink
Gene Summary	YY1 is a ubiquitously distributed transcription factor belonging to the GLI-Kruppel class of zinc finger proteins. The protein is involved in repressing and activating a diverse number of promoters. YY1 may direct histone deacetylases and histone acetyltransferases to a promoter in order to activate or repress the promoter, thus implicating histone modification in the function of YY1. [provided by RefSeq]
Other Designations	INO80 complex subunit S Yin and Yang 1 protein

Disease

- [Cardiovascular Diseases](#)
- [Diabetes Mellitus](#)
- [Edema](#)