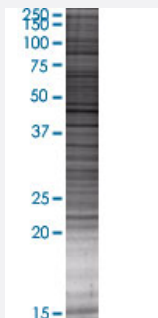


WRB 293T Cell Transient Overexpression Lysate(Denatured)

Catalog # H00007485-T03

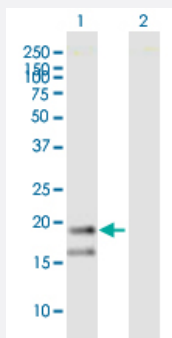
Size 100 uL

Applications



SDS-PAGE Gel

WRB transfected lysate.



Western Blot

Lane 1: WRB transfected lysate (19.8 KDa)

Lane 2: Non-transfected lysate.

Specification

Transfected Cell Line 293T

Plasmid pV5-WRB full-length

Host Human

Theoretical MW (kDa) 19.8

Quality Control Testing Transient overexpression cell lysate was tested with Anti-WRB antibody ([H00007485-B02P](#)) by Western Blots.
SDS-PAGE Gel
WRB transfected lysate.
Western Blot
Lane 1: WRB transfected lysate (19.8 KDa)
Lane 2: Non-transfected lysate.

Storage Buffer	1X Sample Buffer (50 mM Tris-HCl, 2% SDS, 10% glycerol, 300 mM 2-mercaptoethanol, 0.01% Bromophenol blue)
Storage Instruction	Store at -80°C. Aliquot to avoid repeated freezing and thawing.

Applications

- Western Blot

Gene Info — WRB

Entrez GeneID	7485
GeneBank Accession#	NM_004627.2
Protein Accession#	NP_004618.2
Gene Name	WRB
Gene Alias	CHD5
Gene Description	tryptophan rich basic protein
Omim ID	602915
Gene Ontology	Hyperlink
Gene Summary	This gene encodes a basic nuclear protein of unknown function. The gene is widely expressed in adult and fetal tissues. Since the region proposed to contain the gene(s) for congenital heart disease (CHD) in Down syndrome (DS) patients has been restricted to 21q22.2-22.3, this gene, which maps to 21q22.3, has a potential role in the pathogenesis of Down syndrome congenital heart disease. Alternatively spliced transcript variants encoding different isoforms have been found for this gene. [provided by RefSeq]
Other Designations	congenital heart disease 5 protein