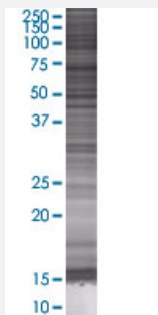


WRB 293T Cell Transient Overexpression Lysate(Denatured)

Catalog # H00007485-T01

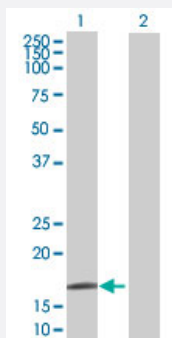
Size 100 uL

Applications



SDS-PAGE Gel

WRB transfected lysate.



Western Blot

Lane 1: WRB transfected lysate (19.25 KDa)

Lane 2: Non-transfected lysate.

Specification

Transfected Cell Line 293T

Plasmid pCMV-WRB full-length

Host Human

Theoretical MW (kDa) 19.25

Quality Control Testing Transient overexpression cell lysate was tested with Anti-WRB antibody ([H00007485-B01](#)) by Western Blots.
 SDS-PAGE Gel
 WRB transfected lysate.
 Western Blot
 Lane 1: WRB transfected lysate (19.25 KDa)
 Lane 2: Non-transfected lysate.

Storage Buffer

1X Sample Buffer (50 mM Tris-HCl, 2% SDS, 10% glycerol, 300 mM 2-mercaptoethanol, 0.01% Bromophenol blue)

Storage Instruction

Store at -80°C. Aliquot to avoid repeated freezing and thawing.

Applications

- Western Blot

Gene Info — WRB

Entrez GeneID[7485](#)**GeneBank Accession#**[NM_004627.2](#)**Protein Accession#**[NP_004618.2](#)**Gene Name**

WRB

Gene Alias

CHD5

Gene Description

tryptophan rich basic protein

Omim ID[602915](#)**Gene Ontology**[Hyperlink](#)**Gene Summary**

This gene encodes a basic nuclear protein of unknown function. The gene is widely expressed in adult and fetal tissues. Since the region proposed to contain the gene(s) for congenital heart disease (CHD) in Down syndrome (DS) patients has been restricted to 21q22.2-22.3, this gene, which maps to 21q22.3, has a potential role in the pathogenesis of Down syndrome congenital heart disease. Alternatively spliced transcript variants encoding different isoforms have been found for this gene. [provided by RefSeq]

Other Designations

congenital heart disease 5 protein