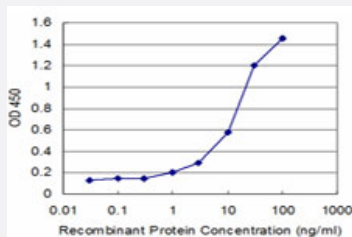


WRB monoclonal antibody (M05), clone 4D6

Catalog # H00007485-M05

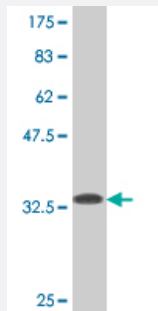
Size 100 ug

Applications



Sandwich ELISA (Recombinant protein)

Detection limit for recombinant GST tagged WRB is approximately 1ng/ml as a capture antibody.



Western Blot detection against Immunogen (33.77 KDa) .

Specification

Product Description

Mouse monoclonal antibody raised against a partial recombinant WRB.

Immunogen

WRB (NP_004618, 29 a.a. ~ 101 a.a) partial recombinant protein with GST tag. MW of the GST tag alone is 26 KDa.

Sequence

PSFSSFMSRVLQKDAEQESQMRAEIQDMKQELSTVNMMEDEFARYARLERKINKMTDKLKTHVKA
RTAQLAKIK

Host

Mouse

Reactivity

Human

Isotype

IgG2a Kappa

Quality Control Testing

Antibody Reactive Against Recombinant Protein.
Western Blot detection against Immunogen (33.77 KDa) .

Storage Buffer

In 1x PBS, pH 7.4

Storage Instruction

Store at -20°C or lower. Aliquot to avoid repeated freezing and thawing.

Applications

- Western Blot (Recombinant protein)

[Protocol Download](#)

- Sandwich ELISA (Recombinant protein)

Detection limit for recombinant GST tagged WRB is approximately 1ng/ml as a capture antibody.

[Protocol Download](#)

- ELISA

Gene Info — WRB

Entrez GeneID

[7485](#)

GeneBank Accession#

[NM_004627](#)

Protein Accession#

[NP_004618](#)

Gene Name

WRB

Gene Alias

CHD5

Gene Description

tryptophan rich basic protein

Omim ID

[602915](#)

Gene Ontology

[Hyperlink](#)

Gene Summary

This gene encodes a basic nuclear protein of unknown function. The gene is widely expressed in adult and fetal tissues. Since the region proposed to contain the gene(s) for congenital heart disease (CHD) in Down syndrome (DS) patients has been restricted to 21q22.2-22.3, this gene, which maps to 21q22.3, has a potential role in the pathogenesis of Down syndrome congenital heart disease. Alternatively spliced transcript variants encoding different isoforms have been found for this gene. [provided by RefSeq]

Other Designationscongenital heart disease 5 protein
