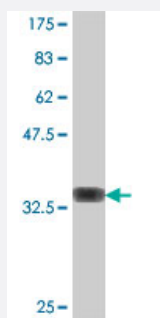


# WRB polyclonal antibody (A01)

Catalog # H00007485-A01

Size 50 uL

## Applications



Western Blot detection against Immunogen (34.14 KDa) .

## Specification

<b>Product Description</b>	Mouse polyclonal antibody raised against a partial recombinant WRB.
<b>Immunogen</b>	WRB (NP_004618, 29 a.a. ~ 101 a.a) partial recombinant protein with GST tag.
<b>Sequence</b>	PSFSSFMSRVLQKDAEQESQMRAEIQDMKQELSTVNMMDDEFARYARLERKINKMTDKLKTHVKA RTAQLAKIK
<b>Host</b>	Mouse
<b>Reactivity</b>	Human
<b>Quality Control Testing</b>	Antibody Reactive Against Recombinant Protein. Western Blot detection against Immunogen (34.14 KDa) .
<b>Storage Buffer</b>	50 % glycerol
<b>Storage Instruction</b>	Store at -20°C or lower. Aliquot to avoid repeated freezing and thawing.

## Applications

- Western Blot (Recombinant protein)

[Protocol Download](#)

- ELISA

## Gene Info — WRB

Entrez GeneID [7485](#)

GeneBank Accession# [NM\\_004627](#)

Protein Accession# [NP\\_004618](#)

Gene Name WRB

Gene Alias CHD5

Gene Description tryptophan rich basic protein

Omim ID [602915](#)

Gene Ontology [Hyperlink](#)

**Gene Summary** This gene encodes a basic nuclear protein of unknown function. The gene is widely expressed in adult and fetal tissues. Since the region proposed to contain the gene(s) for congenital heart disease (CHD) in Down syndrome (DS) patients has been restricted to 21q22.2-22.3, this gene, which maps to 21q22.3, has a potential role in the pathogenesis of Down syndrome congenital heart disease. Alternatively spliced transcript variants encoding different isoforms have been found for this gene. [provided by RefSeq]

**Other Designations** congenital heart disease 5 protein